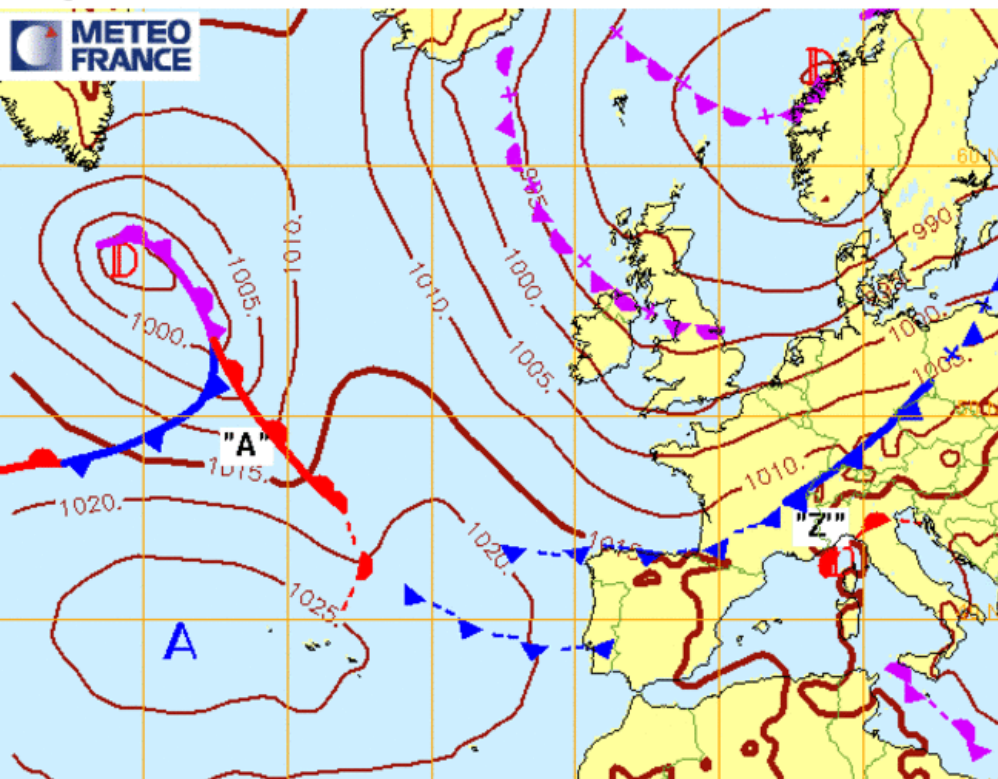


Vendredi 18 Novembre 2016

Masse d'air instable derrière le front froid



Analyse Fronts et isobares du 18/11/2016 18hUTC (reseau: 18/11/2016 18hUTC)



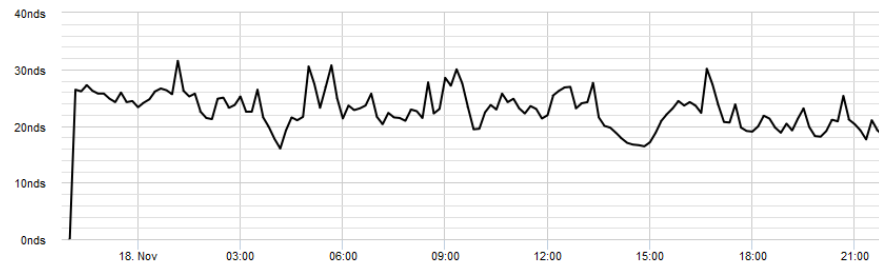
Isthme - Saint Pierre Quiberon

2 dernières heures Graphique 6h Graphique 24h **8 derniers jours** Modifier

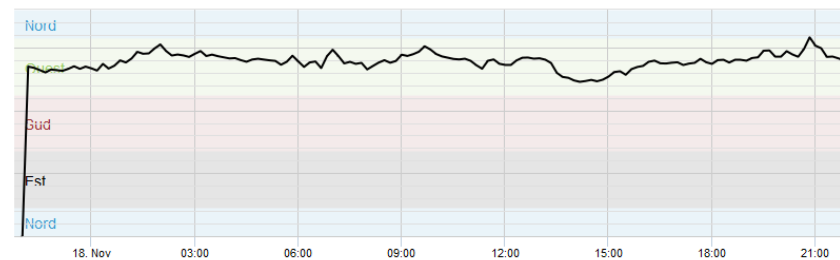
18/nov 17/nov 16/nov 15/nov 14/nov 13/nov 12/nov 11/nov

Afficher

— Vitesse moy du vent — Vitesse min du vent — Vitesse max du vent



— Direction moy du vent — Direction min du vent — Direction max du vent



Vendredi 18 Novembre 2016
Masse d'air instable derrière le front froid

Cumulonimbus

A large, white, puffy cumulonimbus cloud formation dominates the center of the image, rising from the ocean. The cloud has a distinct, rounded top and a darker, more textured base. The sky is a clear, vibrant blue. In the foreground, the ocean is a deep blue-green color. A small red boat is visible on the horizon to the left, and a dark, rectangular structure is partially submerged in the water on the right. The overall scene is a coastal view under a bright sky.

Vendredi 18 Novembre 2016

Masse d'air instable derrière le front froid - **Vent irrégulier en force et direction**

Isthme - Saint Pierre Quiberon

2 dernières heures

Graphique 6h

Graphique 24h

8 derniers jours

Modifier

18/nov

17/nov

16/nov

15/nov

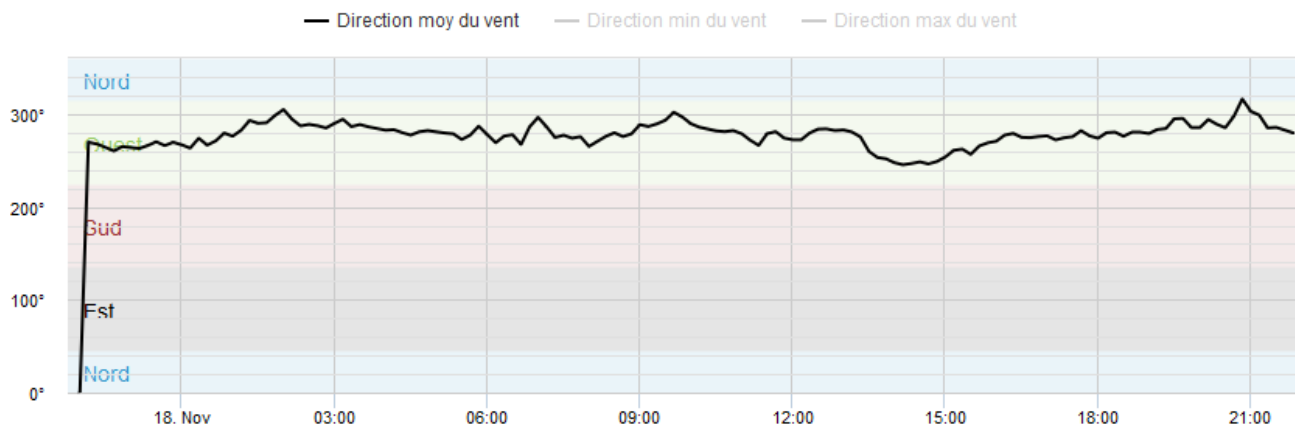
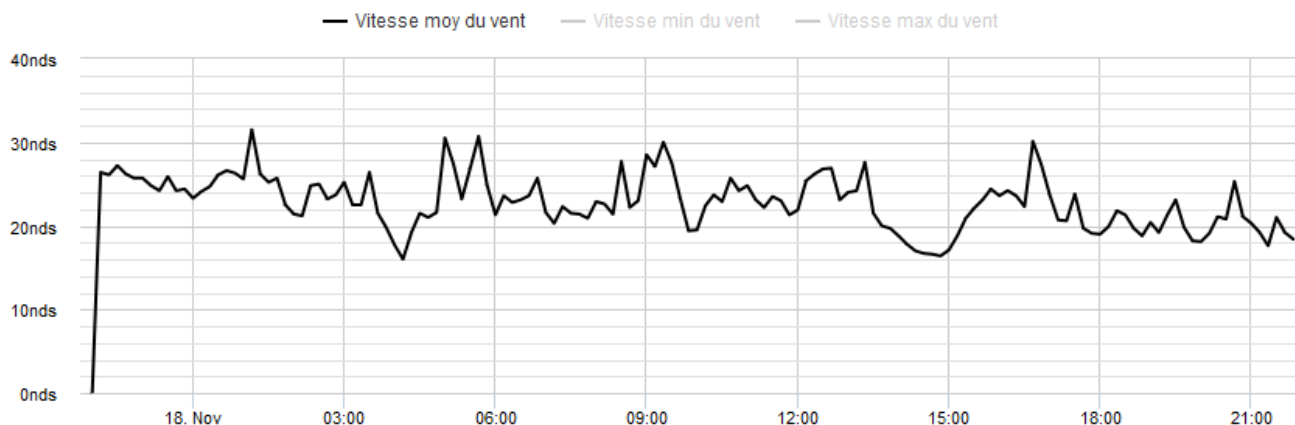
14/nov

13/nov

12/nov

11/nov

Afficher



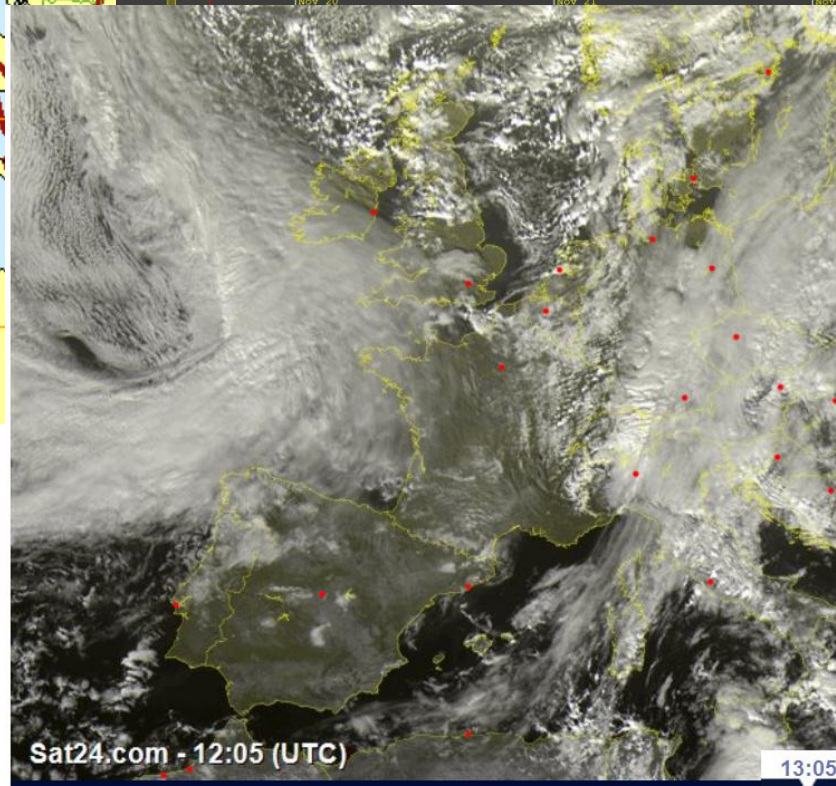
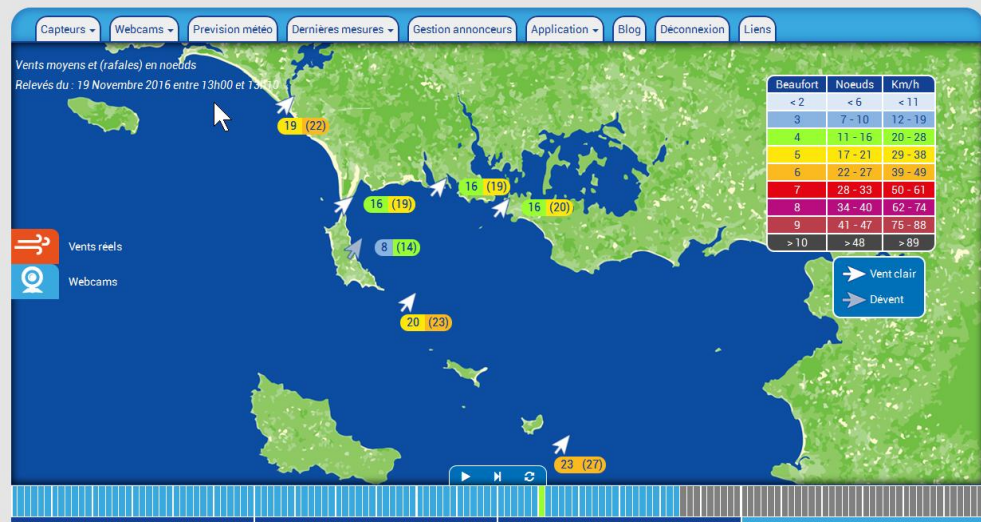
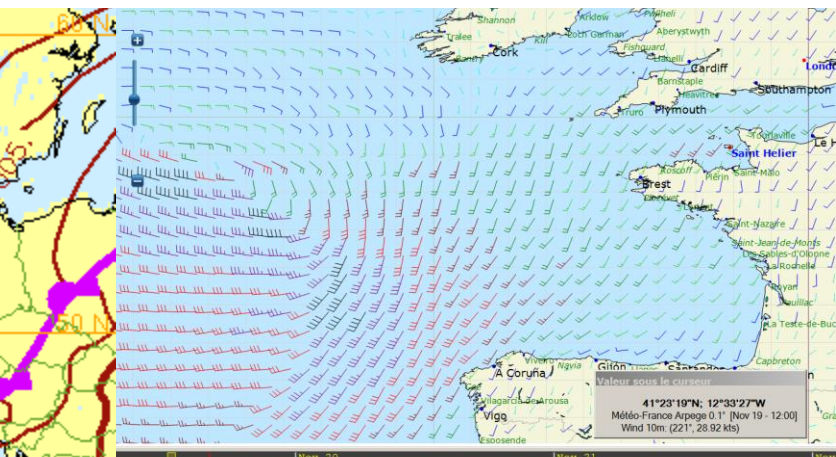
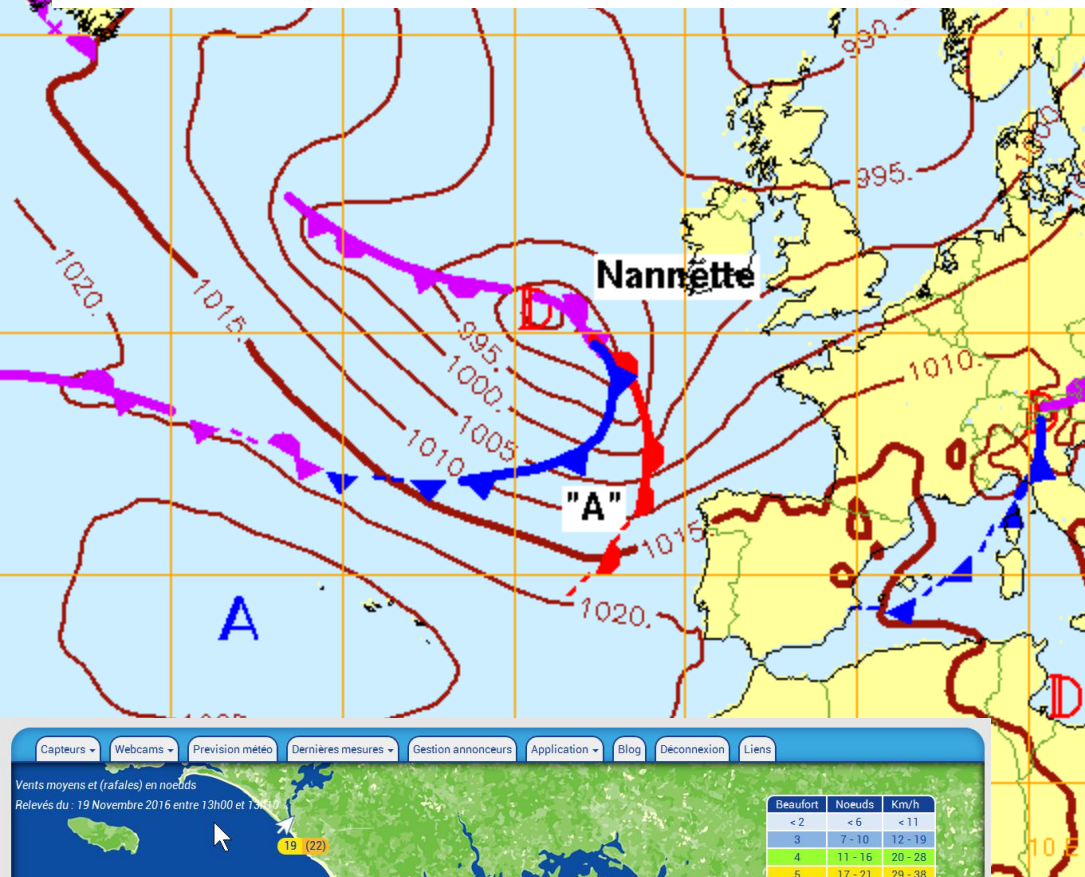
Variations:

- Intensité entre ~18 et 30nds
- Direction entre ~240 et 300°



Samedi 19 novembre 2016

Arrivée du front chaud d'une nouvelle perturbation (ex cyclone Nannette)

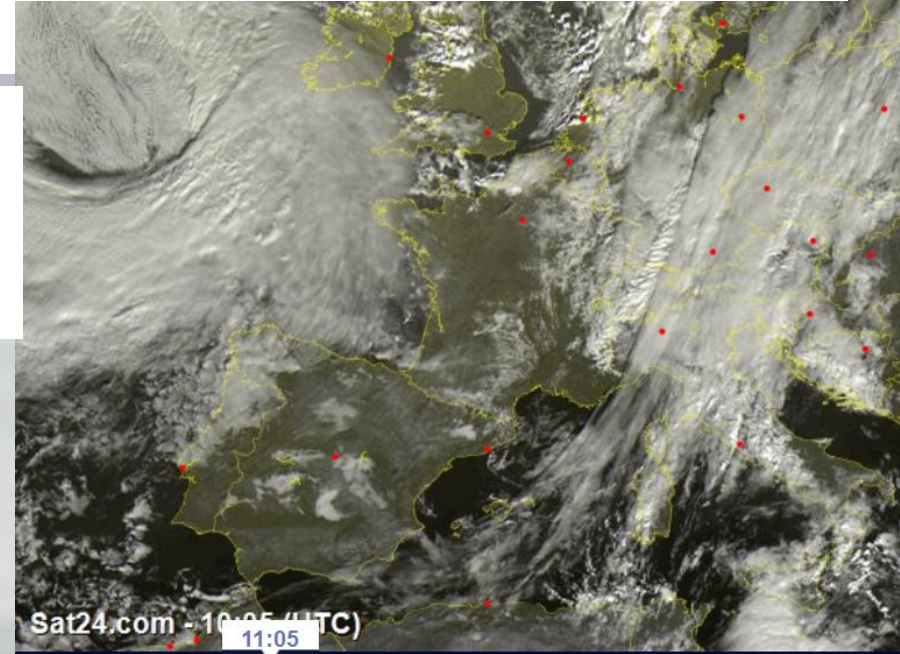


Samedi 19 novembre 2016

Arrivée du front chaud de la Perturbation

Le ciel se couvre progressivement en altitude le matin, avec encore des résidus d'instabilité de la veille.

Cf photo à 11Hloc



Samedi 19 novembre 2016

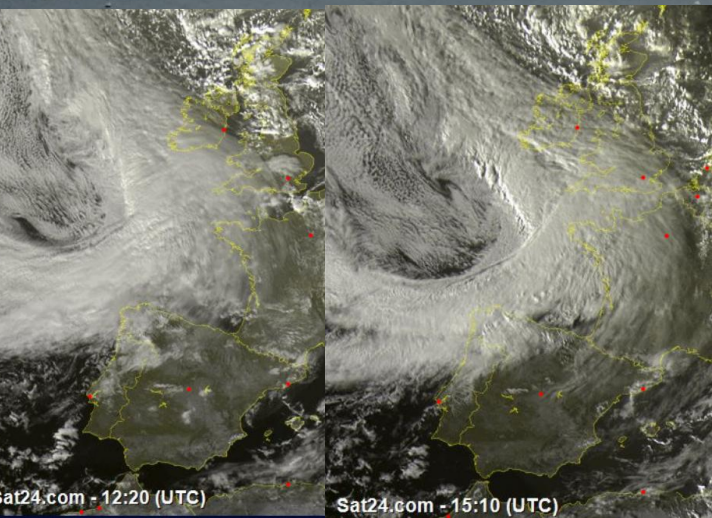
Arrivée du front chaud de la Perturbation

Les nuages s'aplatissent progressivement par le haut

Strato-cumulus sous l'altostratus à
12H30 locale



Le ciel se strate et se densifie au
cours de l'après-midi. Ici à 15H loc



Isthme - Saint Pierre Quibe

Samedi 19 novembre 2016

Arrivée du front chaud de la Perturbation

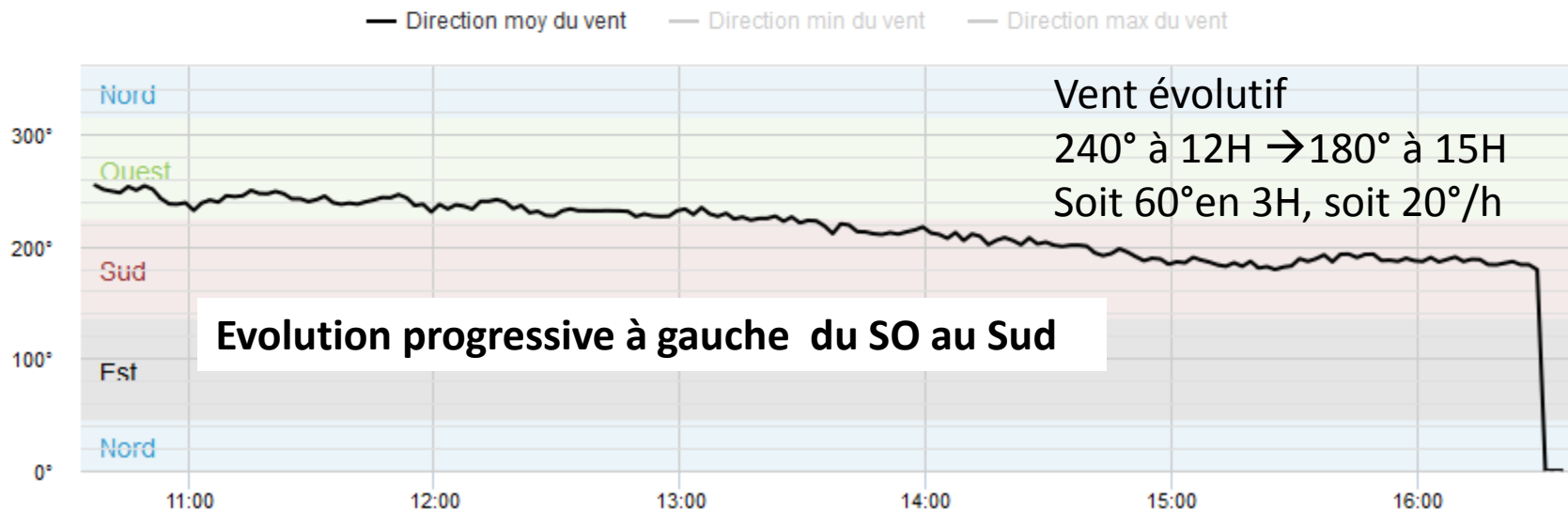
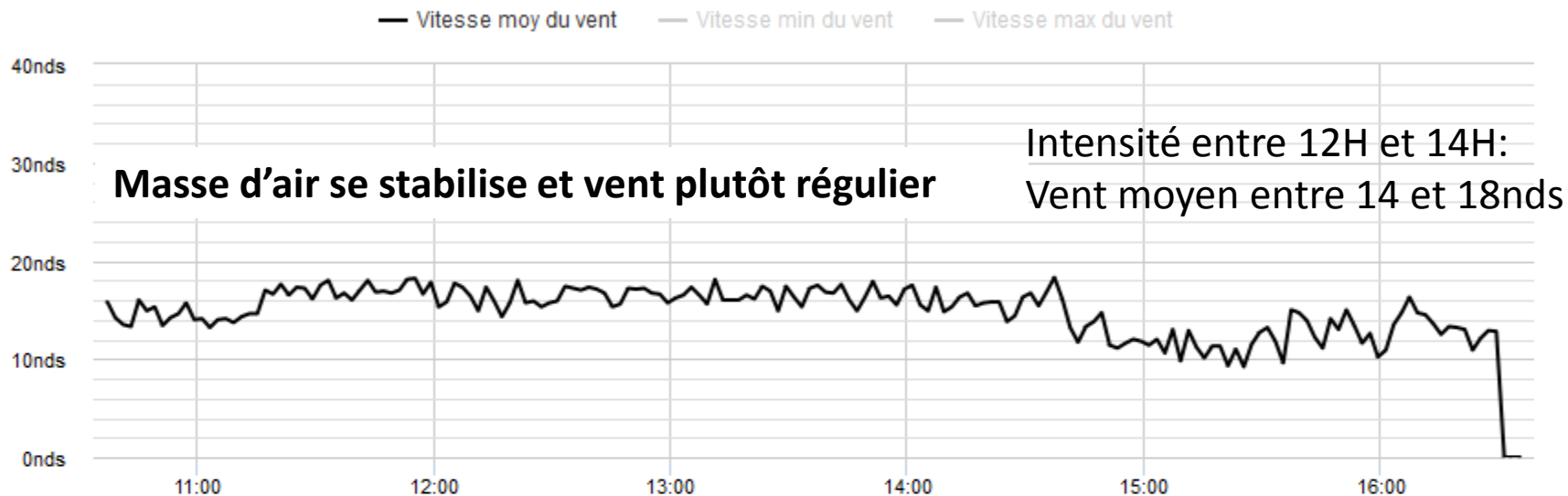
2 dernières heures

Graphique 6h

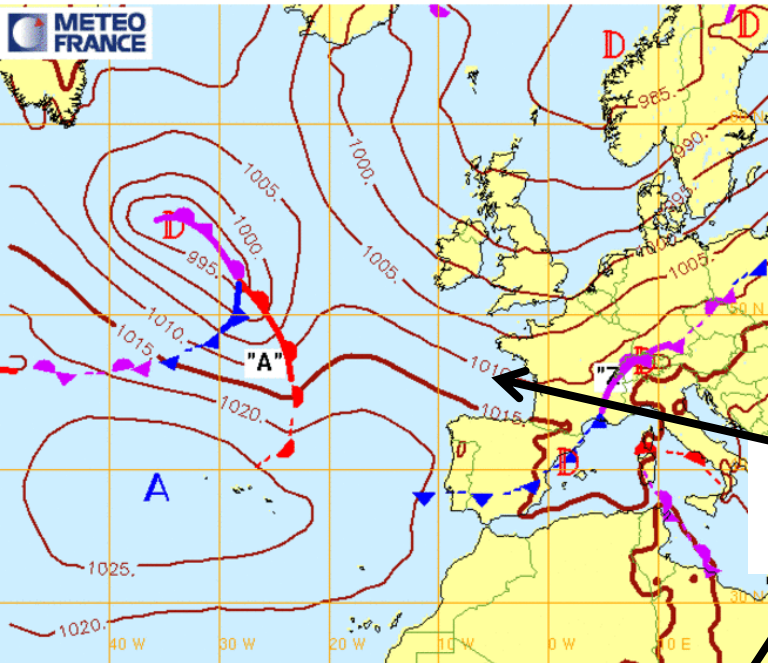
Graphique 24h

8 derniers jours

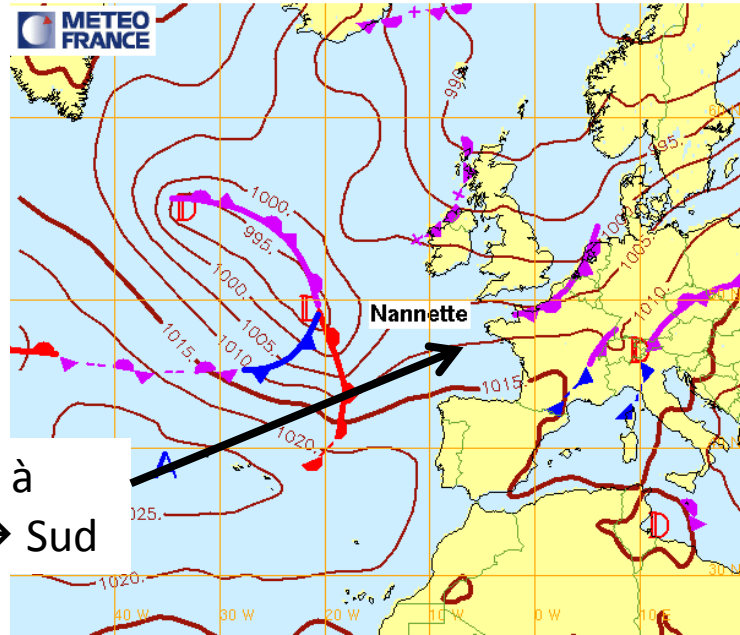
Modifier



Fronts et isobares pour le 19/11/2016 00hUTC (reseau: 18/11/2016 00hUTC)

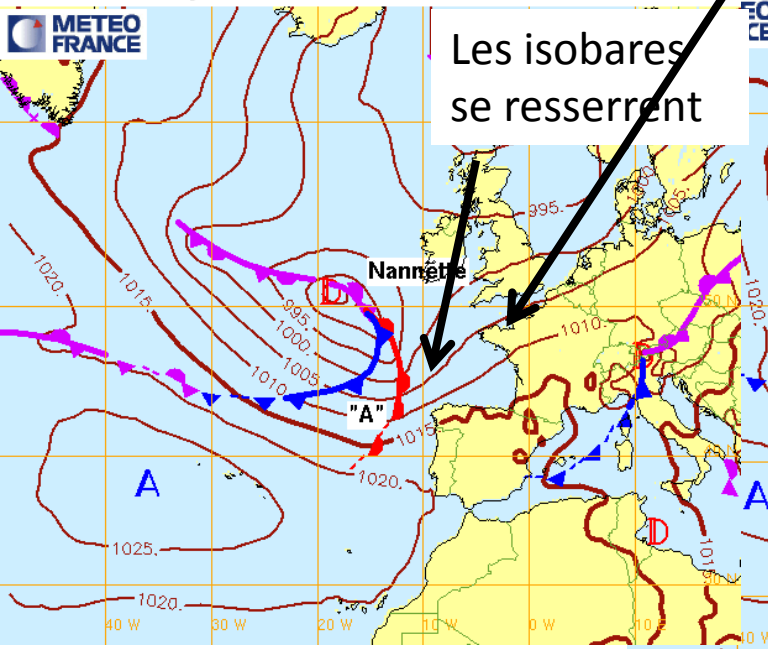


Analyse Fronts et isobares du 19/11/2016 06hUTC (reseau: 19/11/2016 06hUTC)



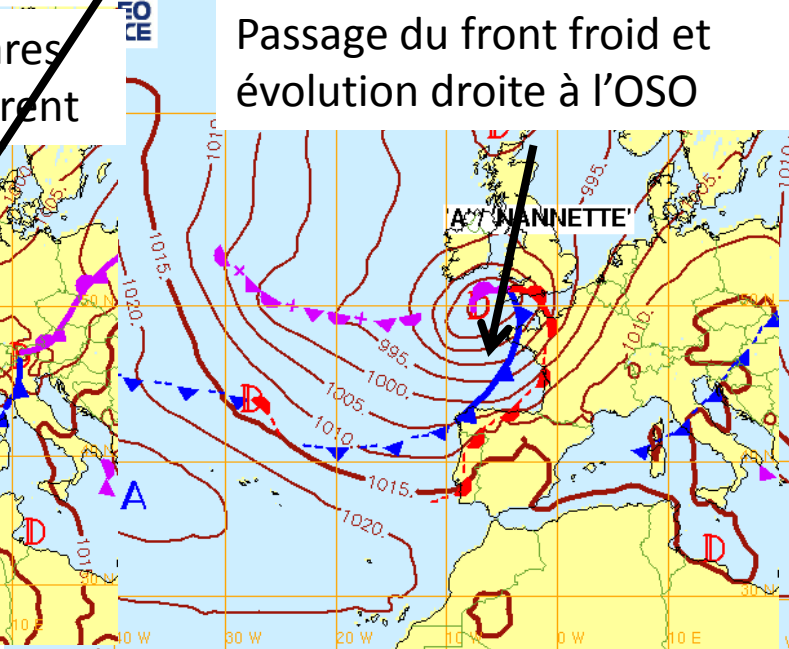
Evolution à gauche → Sud

Fronts et isobares pour le 19/11/2016 12hUTC (reseau: 19/11/2016 00hUTC)



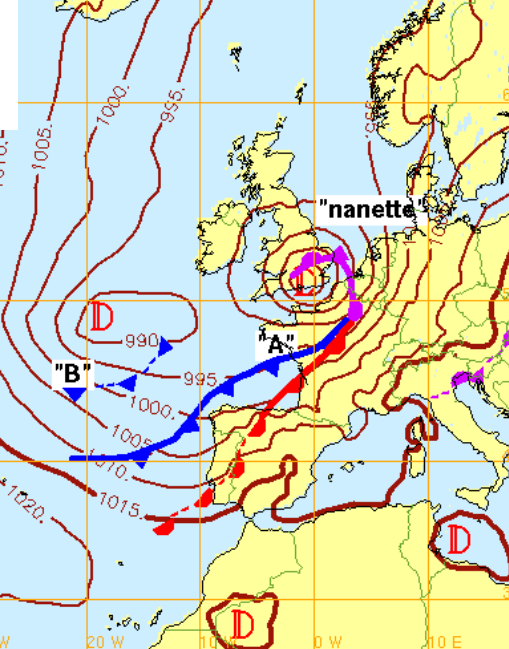
Les isobares se resserrent

Fronts et isobares pour le 20/11/2016 00hUTC (reseau: 19/11/2016 00hUTC)



Passage du front froid et évolution droite à l'OSO

Analyse Fronts et isobares du 20/11/2016 06hUTC (reseau: 20/11/2016 06hUTC)



Isthme - Saint Pierre Quiberon

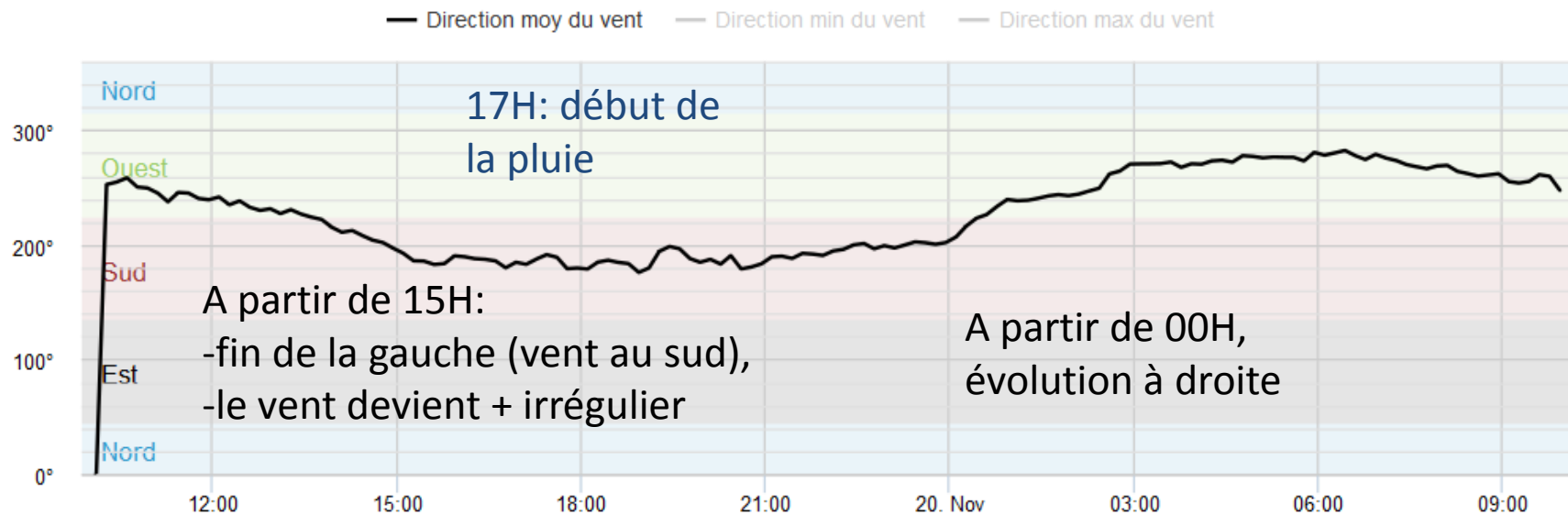
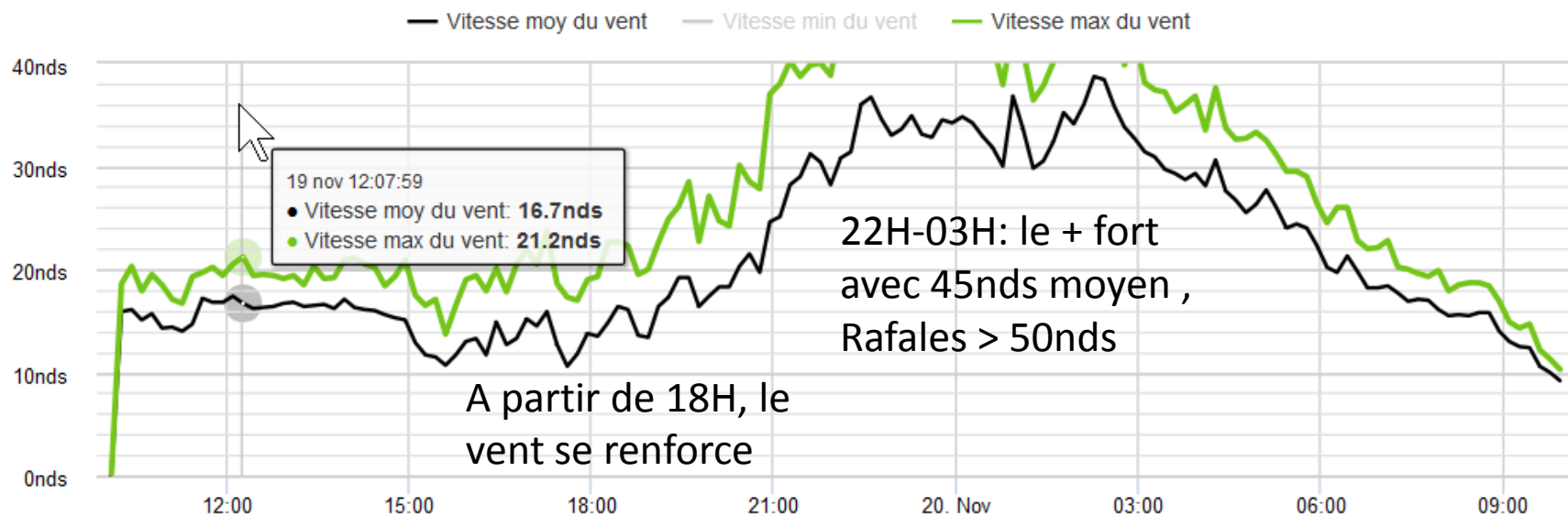
2 dernières heures

Graphique 6h

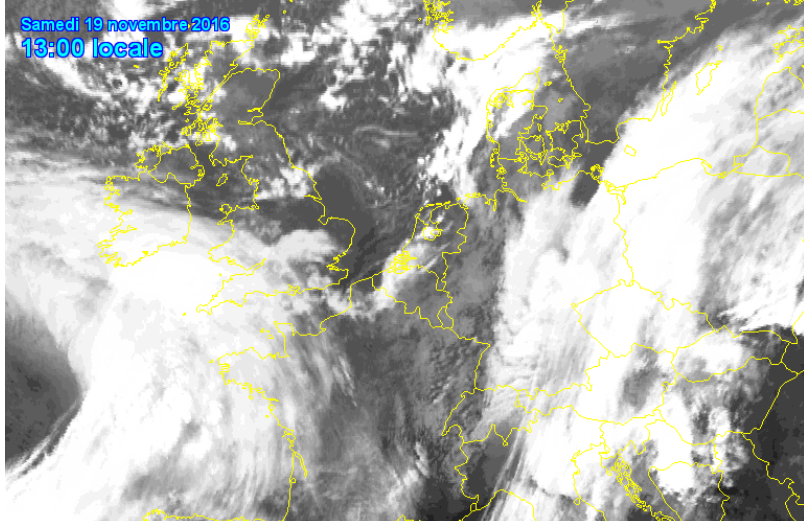
Graphique 24h

8 derniers jours

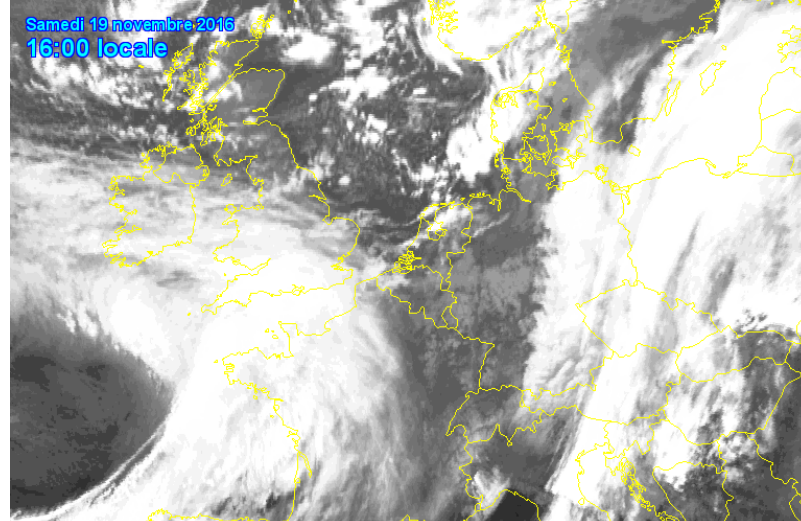
Modifier



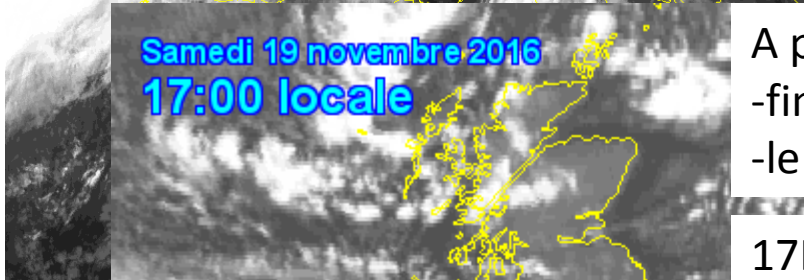
Samedi 19 novembre 2016
13:00 locale



Samedi 19 novembre 2016
16:00 locale



Samedi 19 novembre 2016
17:00 locale

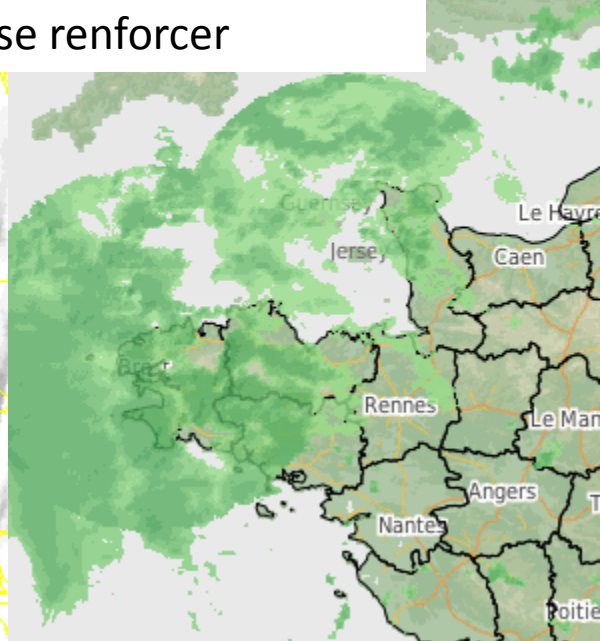
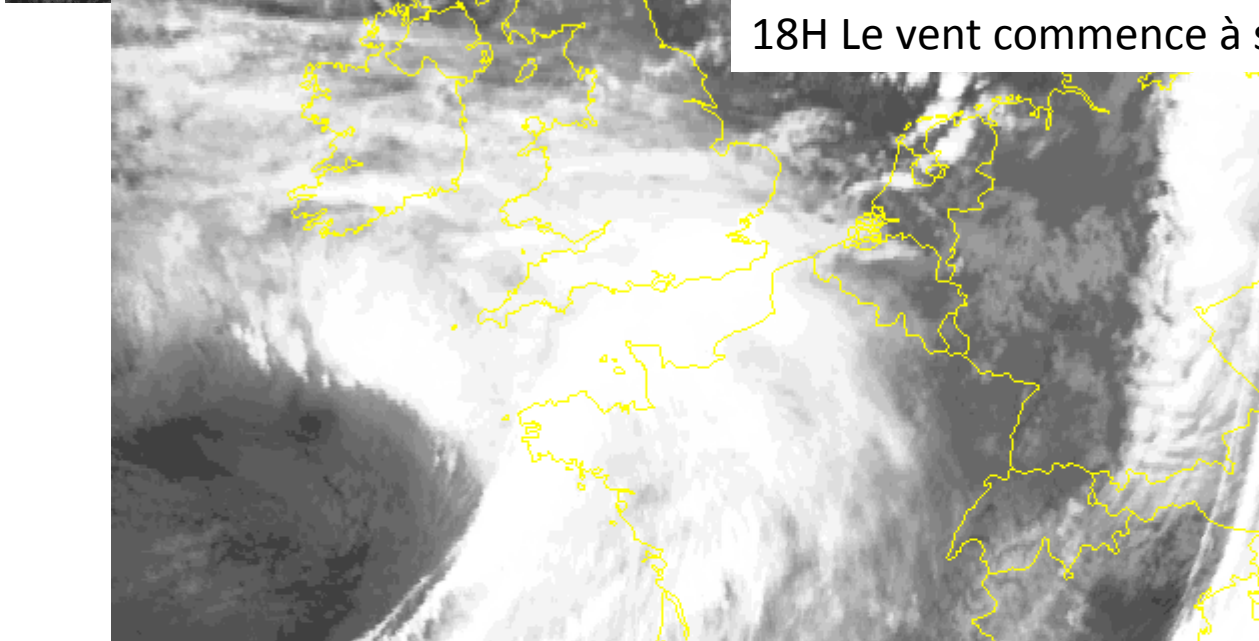


A partir de 15H loc:
-fin de la gauche (vent au sud),
-le vent devient + irrégulier

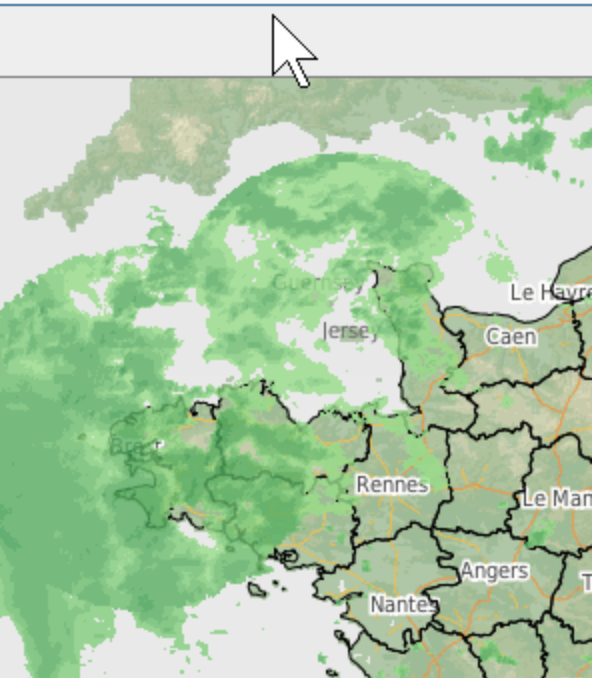


sam 19 nov.
17h00

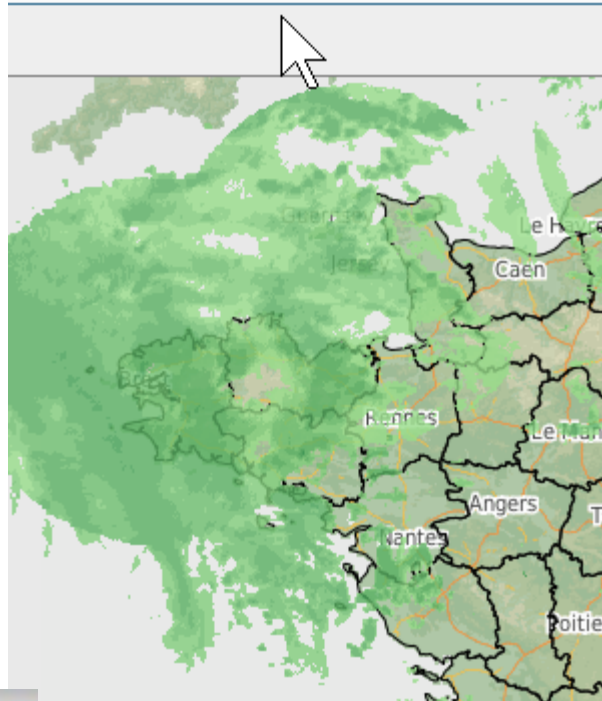
17H Premières pluies à Quiberon
18H Le vent commence à se renforcer



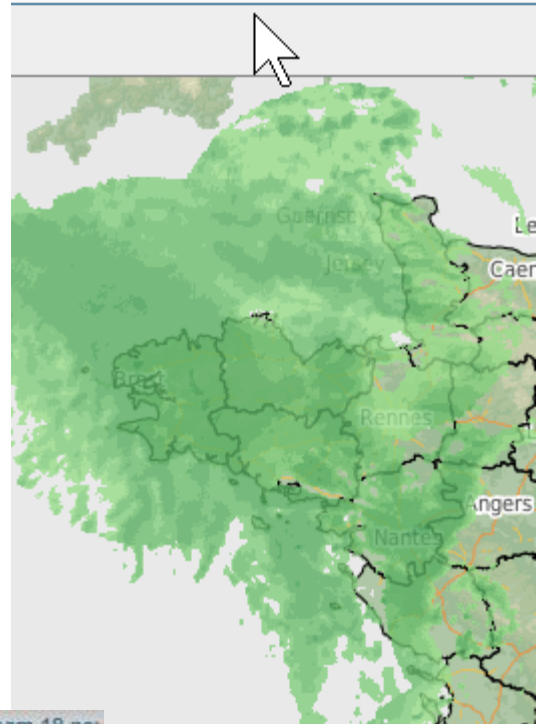
sam 19 nov.
17h00



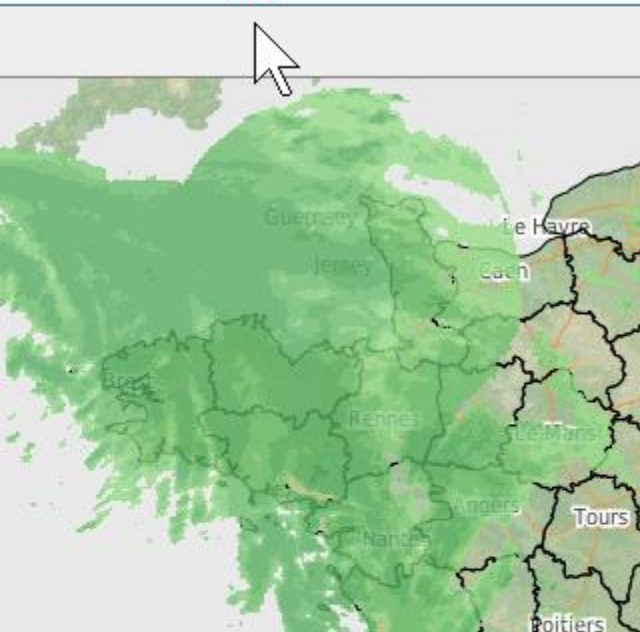
sam 19 nov.
18h00



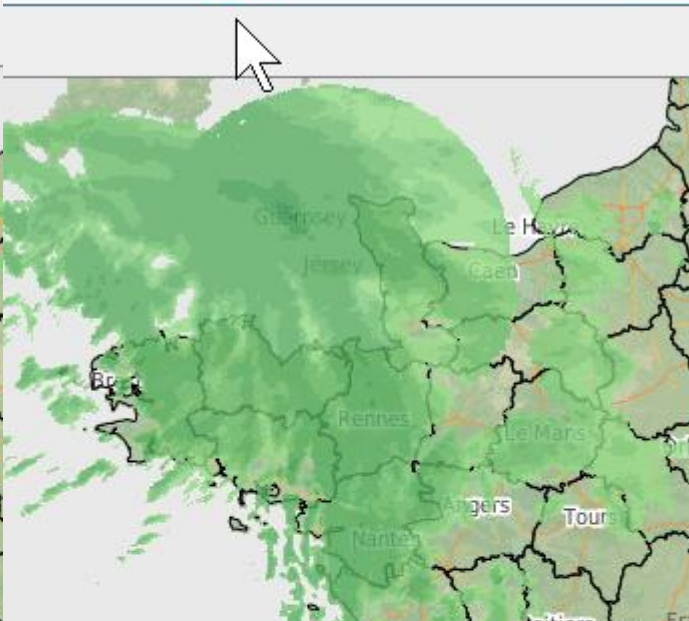
sam 19 nov.
19h00



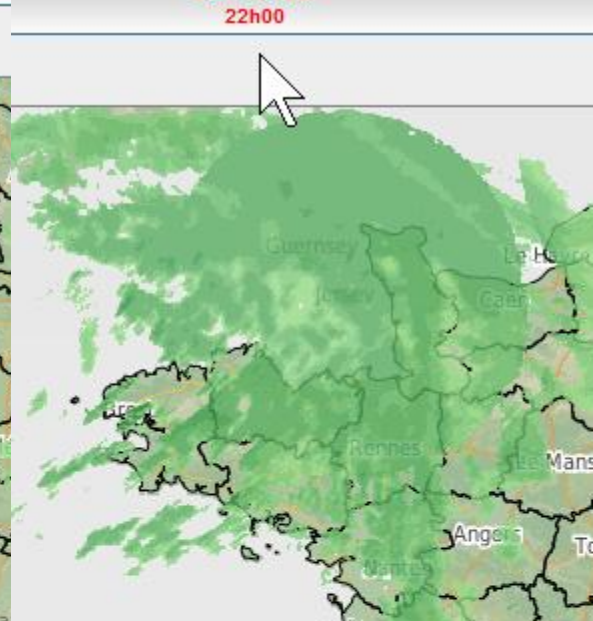
sam 19 nov.
20h00



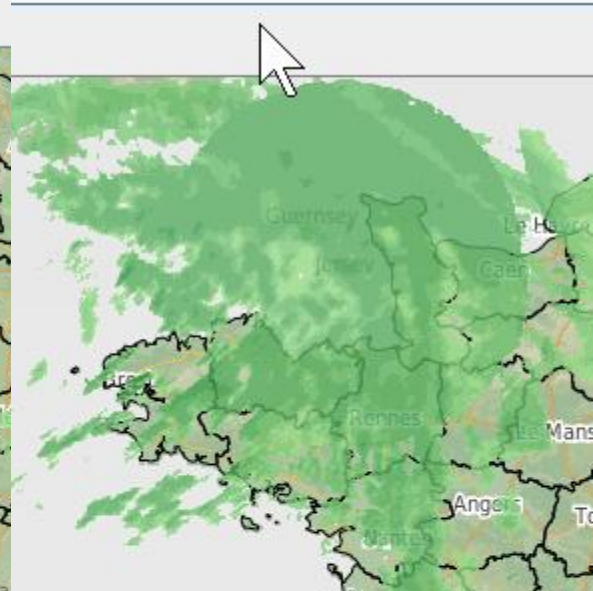
sam 19 nov.
21h00

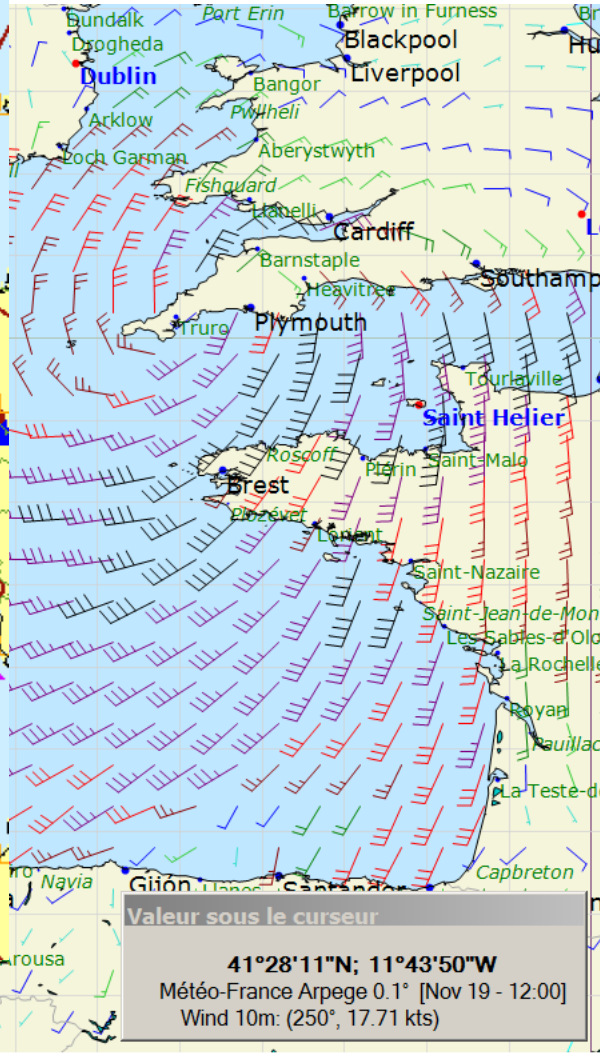
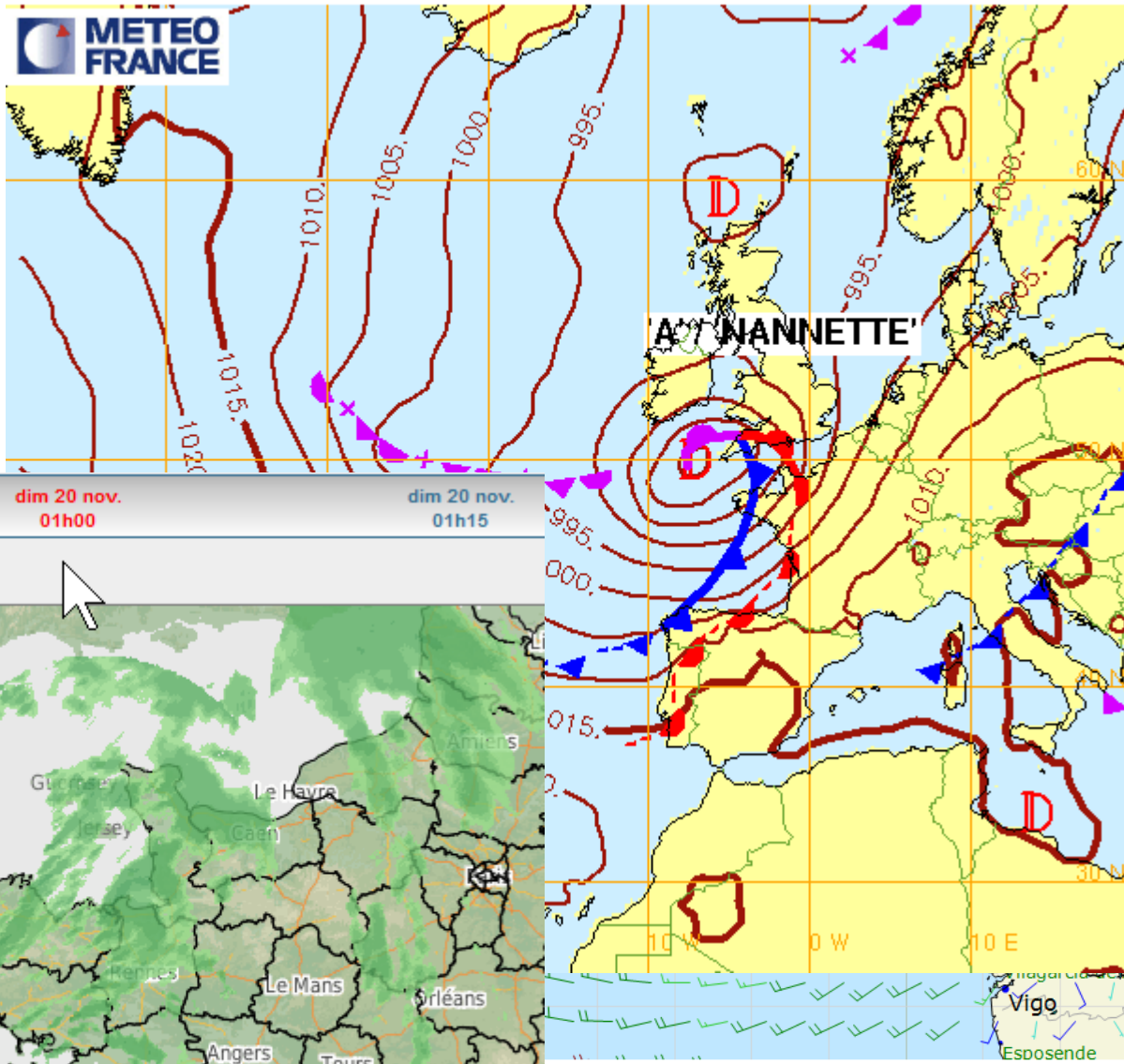


sam 19 nov.
21h15



sam 19 nov.
22h00





dim 20 nov.
01h00

dim 20 nov.
01h15

Valeur sous le curseur
41°28'11"N; 11°43'50"W
Météo-France Arpege 0.1° [Nov 19 - 12:00]
Wind 10m: (250°, 17.71 kts)

Nov 20

Nov 21



Capteurs ▾

Webcams ▾

Prevision météo

Dernières mesures ▾

Gestion annonceurs

Application ▾

Blog

Déconnexion

Liens

Vents moyens et (rafales) en noeuds

Relevés du : 20 Novembre 2016 entre 0h00 et 0h10

43 (53)

35 (43)

37 (48)

30 (44)

17 (28)

40 (49)

47 (56)

Beaufort	Noeuds	Km/h
< 2	< 6	< 11
3	7 - 10	12 - 19
4	11 - 16	20 - 28
5	17 - 21	29 - 38
6	22 - 27	39 - 49
7	28 - 33	50 - 61
8	34 - 40	62 - 74
9	41 - 47	75 - 88
> 10	> 48	> 89

➔ Vent clair
➔ Dévent



Vents réels



Webcams

Jeudi 17 Novembre 2016

Vendredi 18 Novembre 2016

Samedi 19 Novembre 2016

Dimanche 20 Novembre 2016