

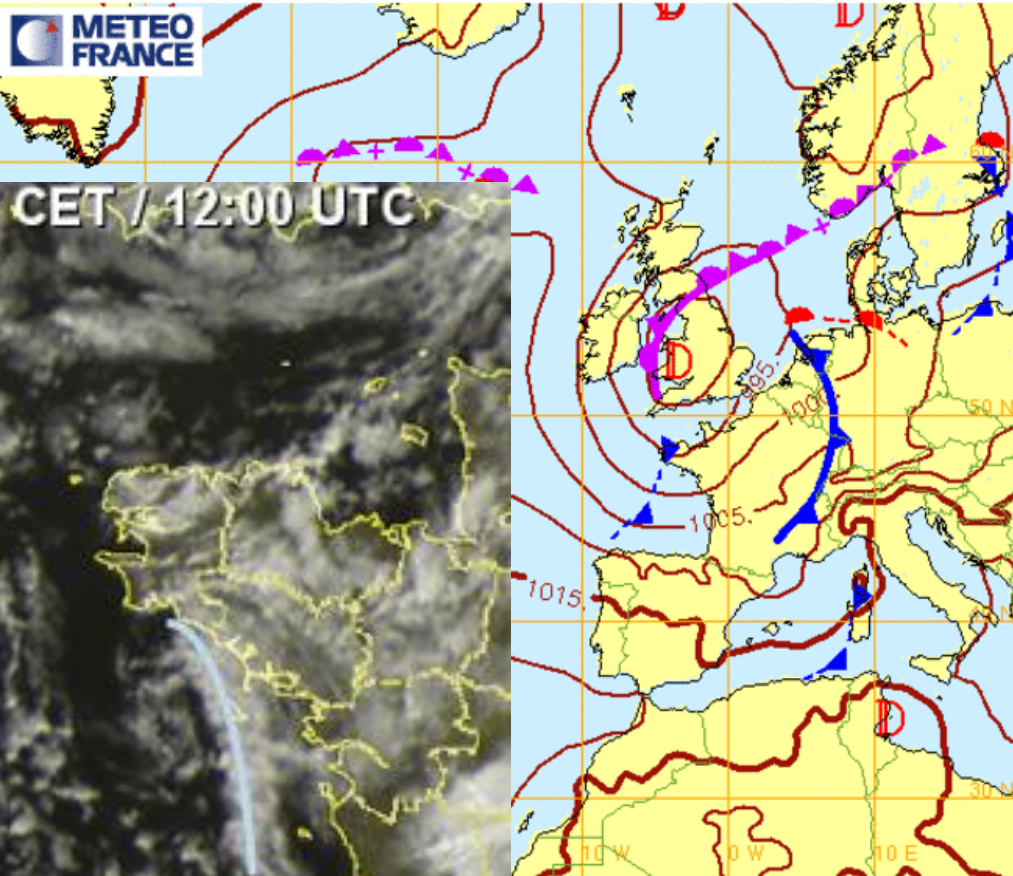
Passage d'un front froid à Quiberon vers 14H30.

Passage pluvieux (14h15-14H45) puis ciel de traîne.

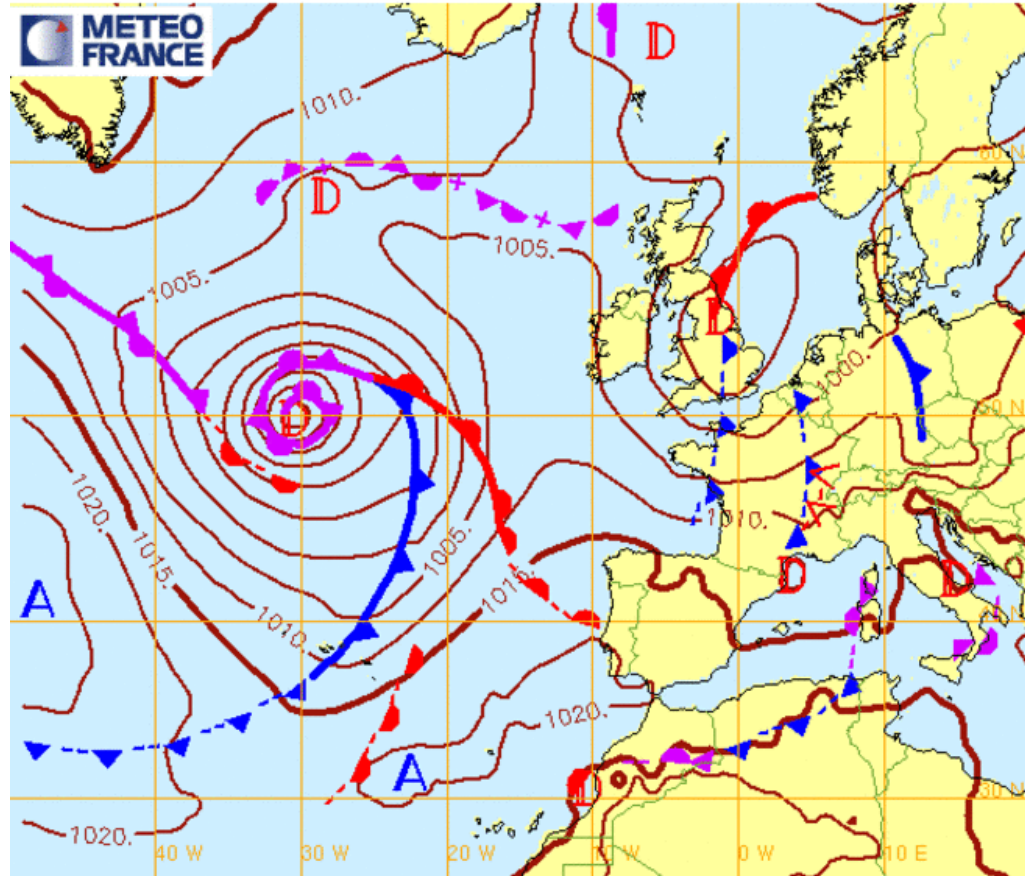
Forte droite: + 40° en 20mn (~210→250) à 15H, juste après la pluie

Légèrement mollissant sous la pluie avant la droite puis forte augmentation avec la droite (~20nds moyen → ~25nds moyen/rafales 30nds)

Fronts et isobares pour le 04/04/2018 12hUTC (reseau: 03/04/2018 12hUTC)



Analyse Fronts et isobares du 04/04/2018 18hUTC (reseau: 04/04/2018 18hUTC)



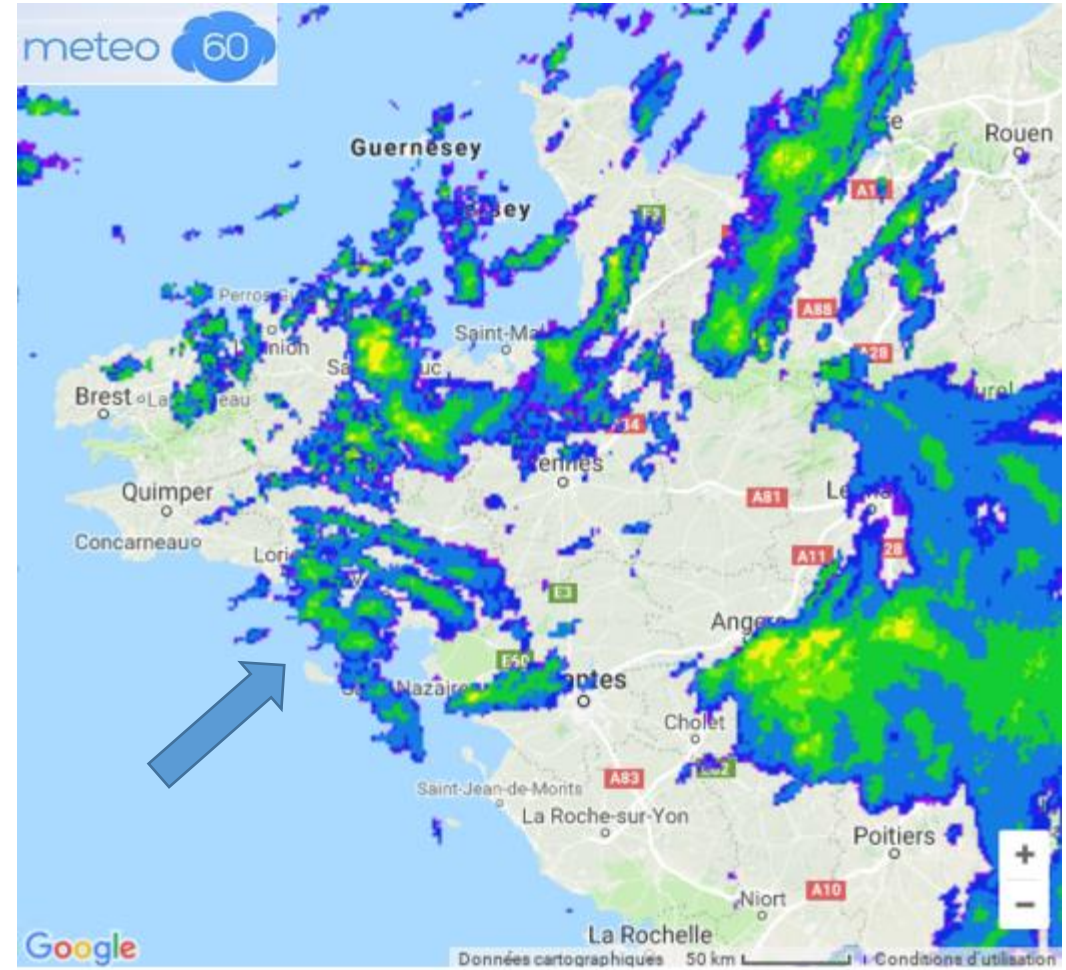
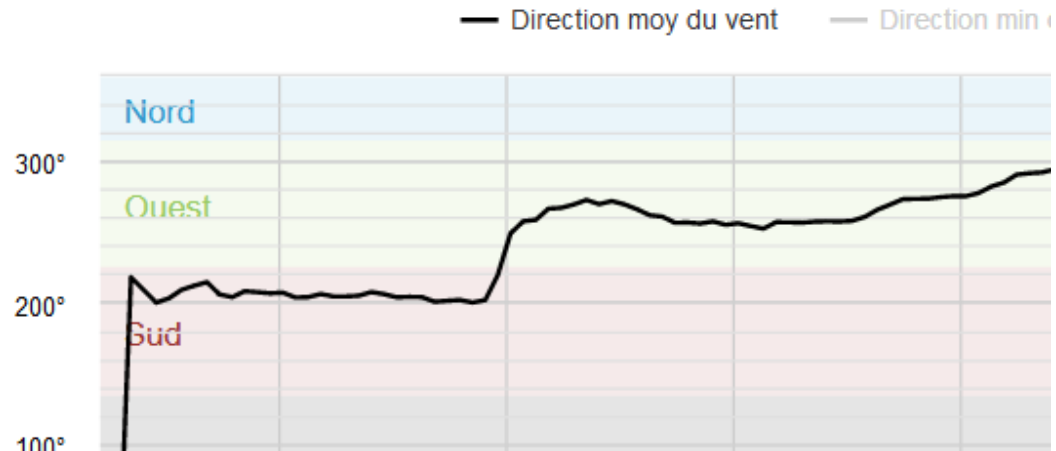
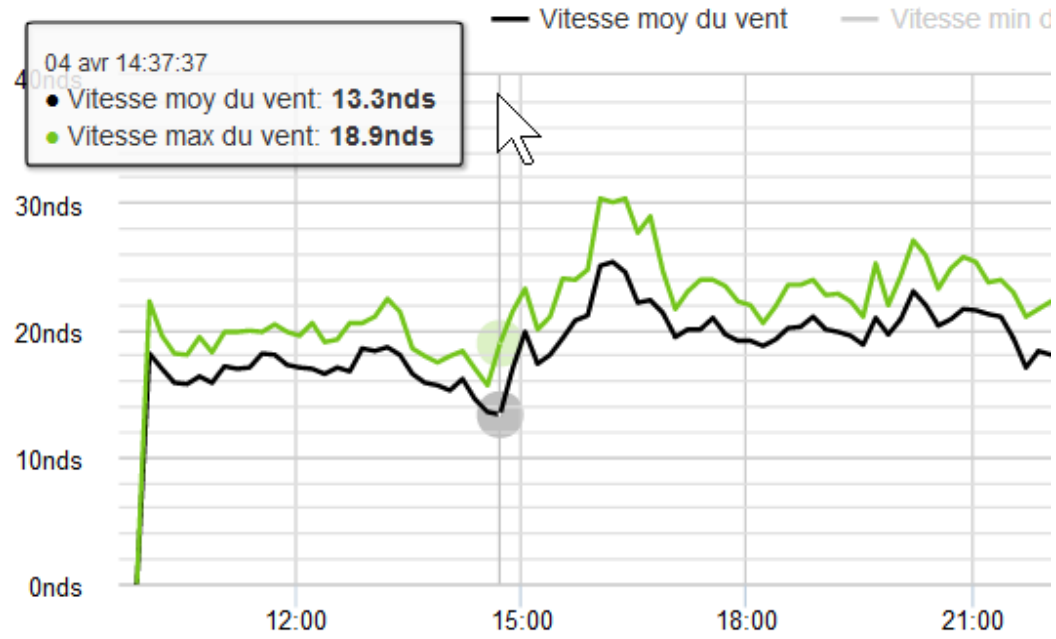
Semaphore d'Etel

2 dernières heures

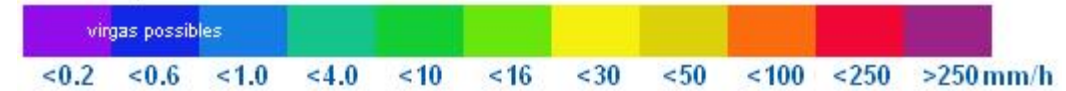
Graphique 6h

Graphique 24h

8 dernie

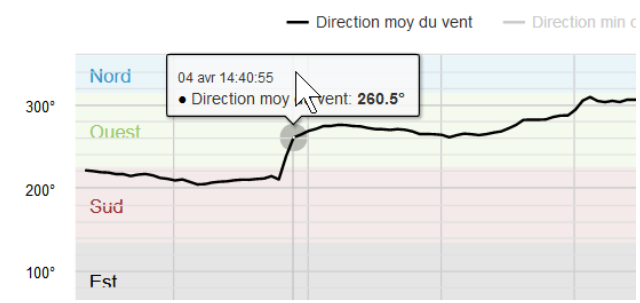
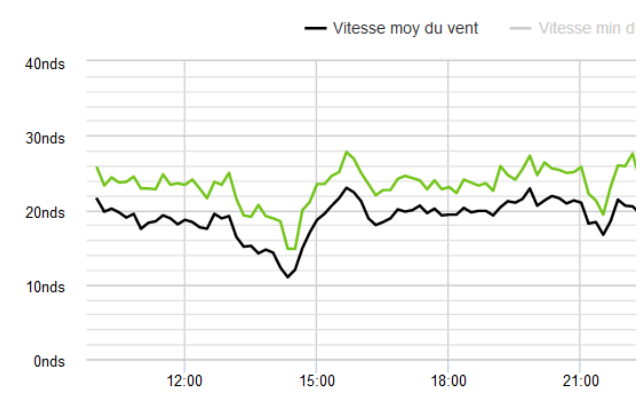


Plus d'images et de fonctionnalités sur www.meteo60.fr 04/04/18 14h30



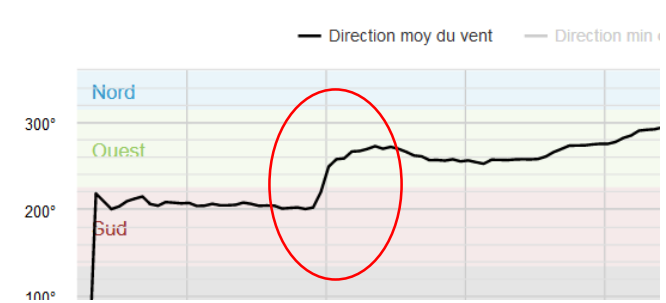
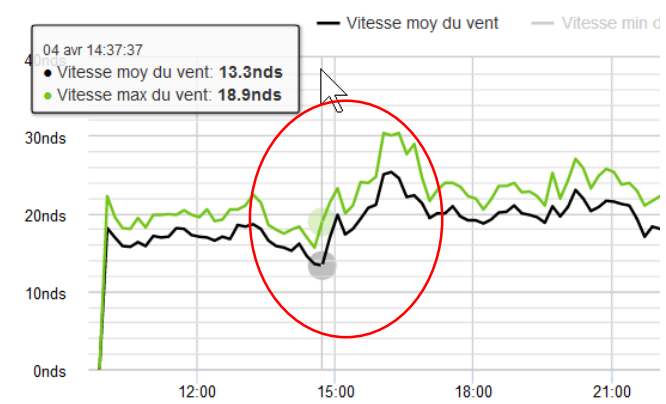
Feu de Kerroch

2 dernières heures Graphique 6h Graphique 24h 8 dernière



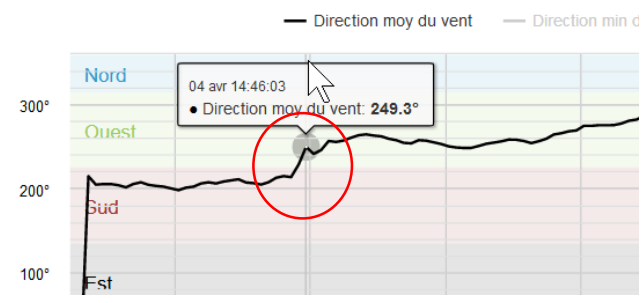
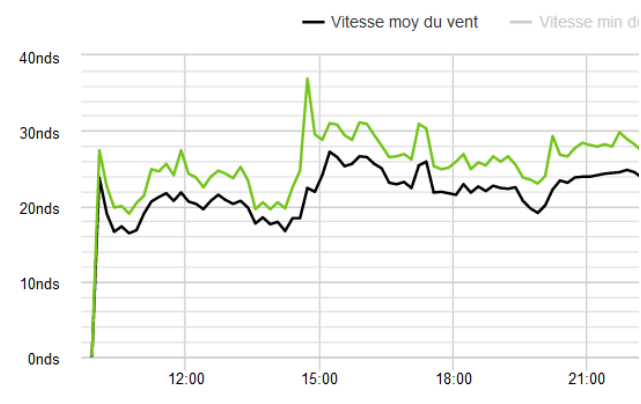
Semaphore d'Etel

2 dernières heures Graphique 6h Graphique 24h 8 dernière



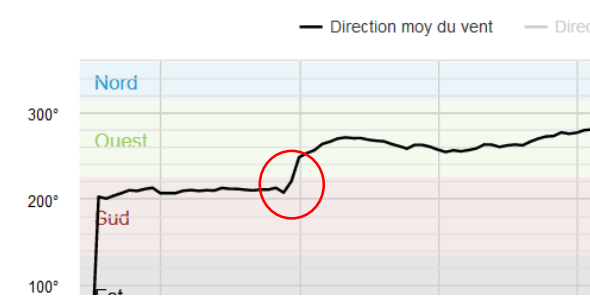
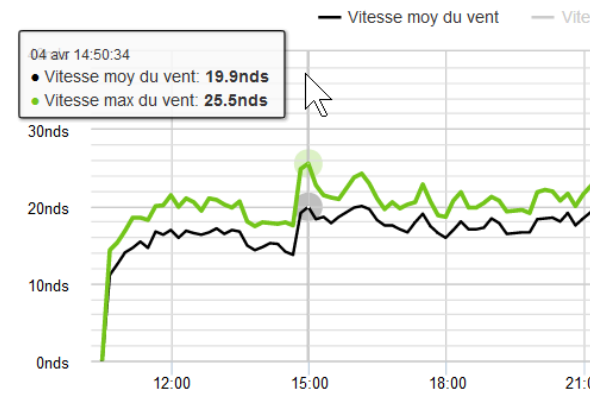
Phare de la Teignouse

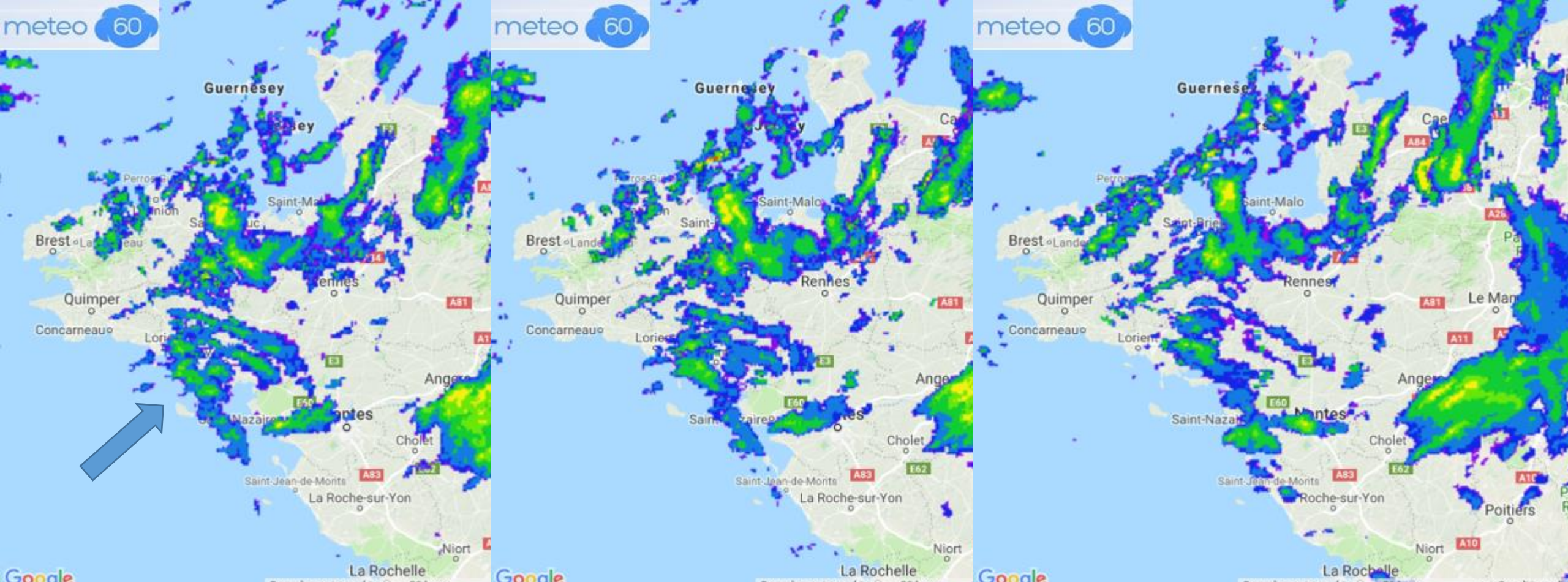
2 dernières heures Graphique 6h Graphique 24h 8 dernière



Isthme - Saint Pierre Quiberon

2 dernières heures Graphique 6h Graphique 24h 8 dernière





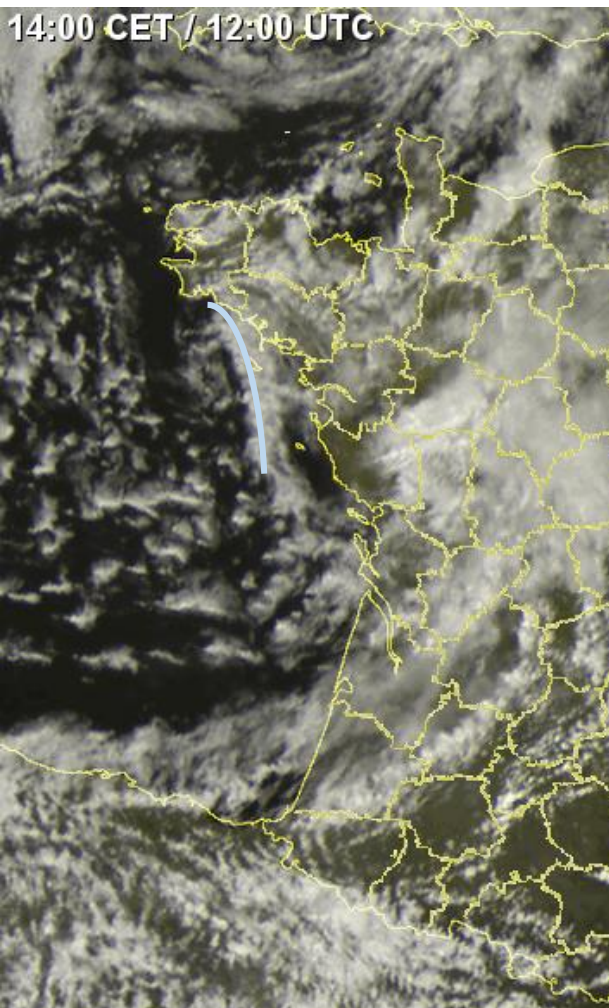
Plus d'images et de fonctionnalités sur www.meteo60.fr 04/04/18 14h30

Plus d'images et de fonctionnalités sur www.meteo60.fr 04/04/18 14h45

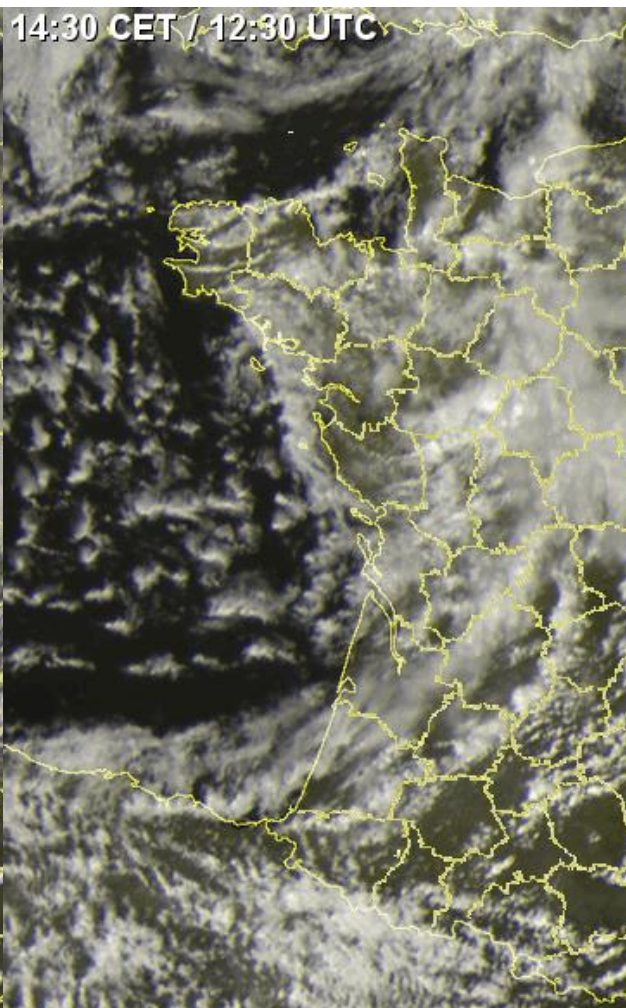
Plus d'images et de fonctionnalités sur www.meteo60.fr 04/04/18 15h00



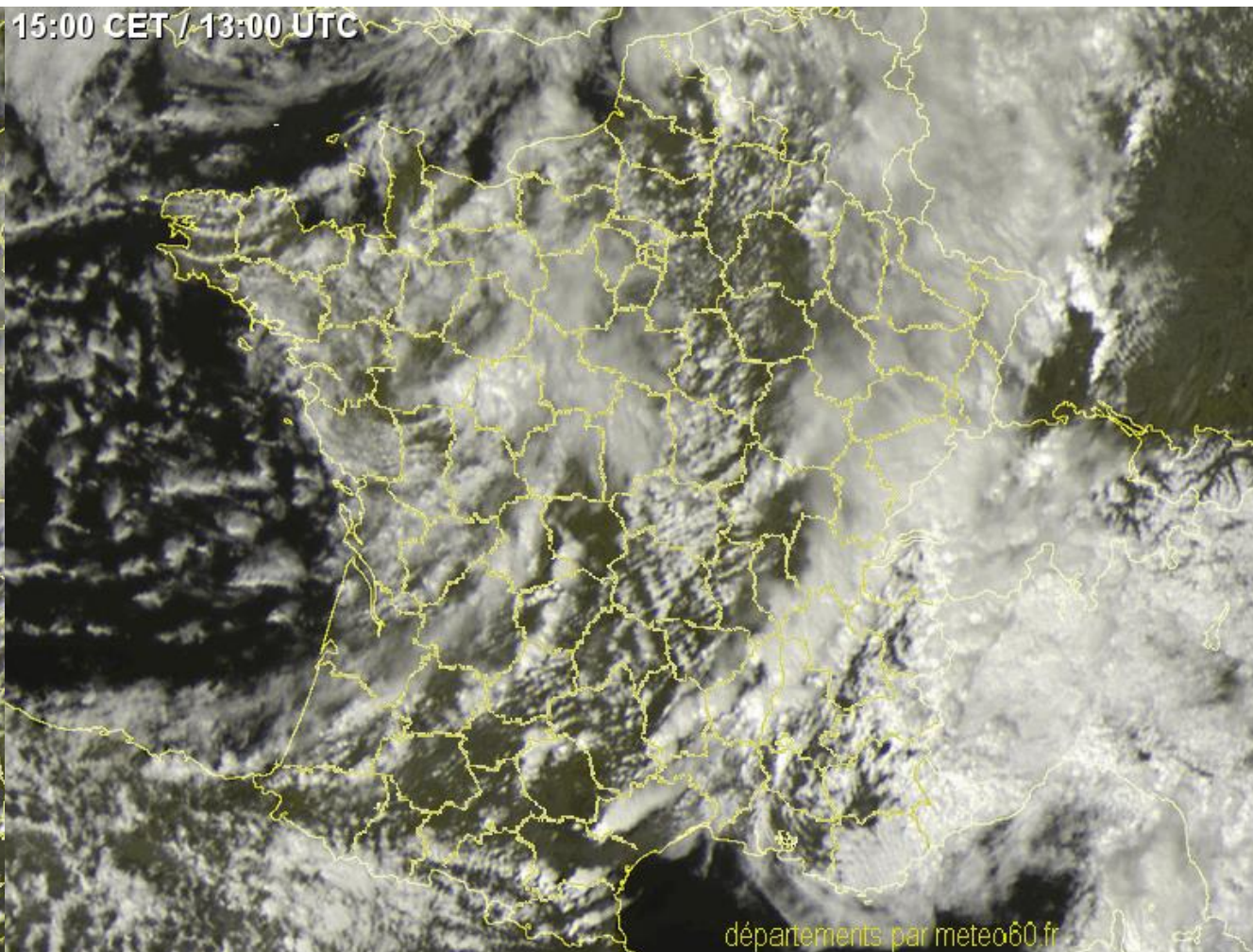
14:00 CET / 12:00 UTC



14:30 CET / 12:30 UTC



15:00 CET / 13:00 UTC



Sat24.com - 14:00 CET / 12:00 UTC

Sat24.com - 14:30 CET / 12:30 UTC

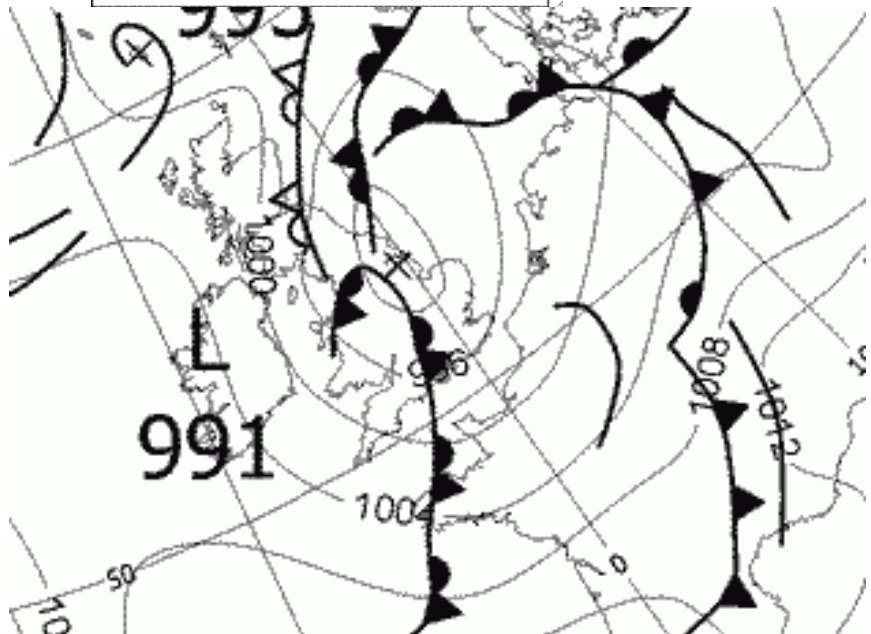
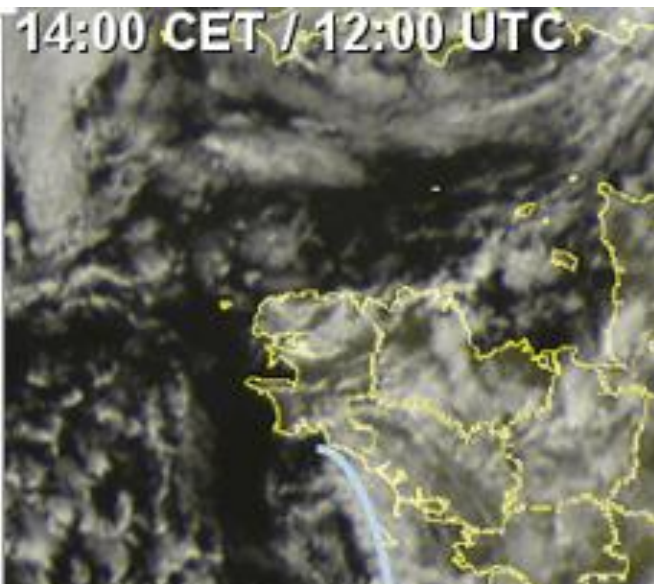
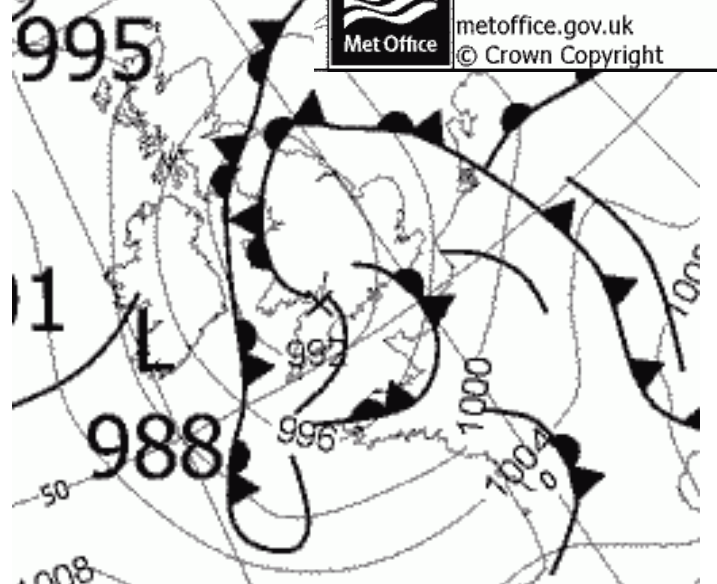
Sat24.com - 15:00 CET / 13:00 UTC

départements par meteo60.fr

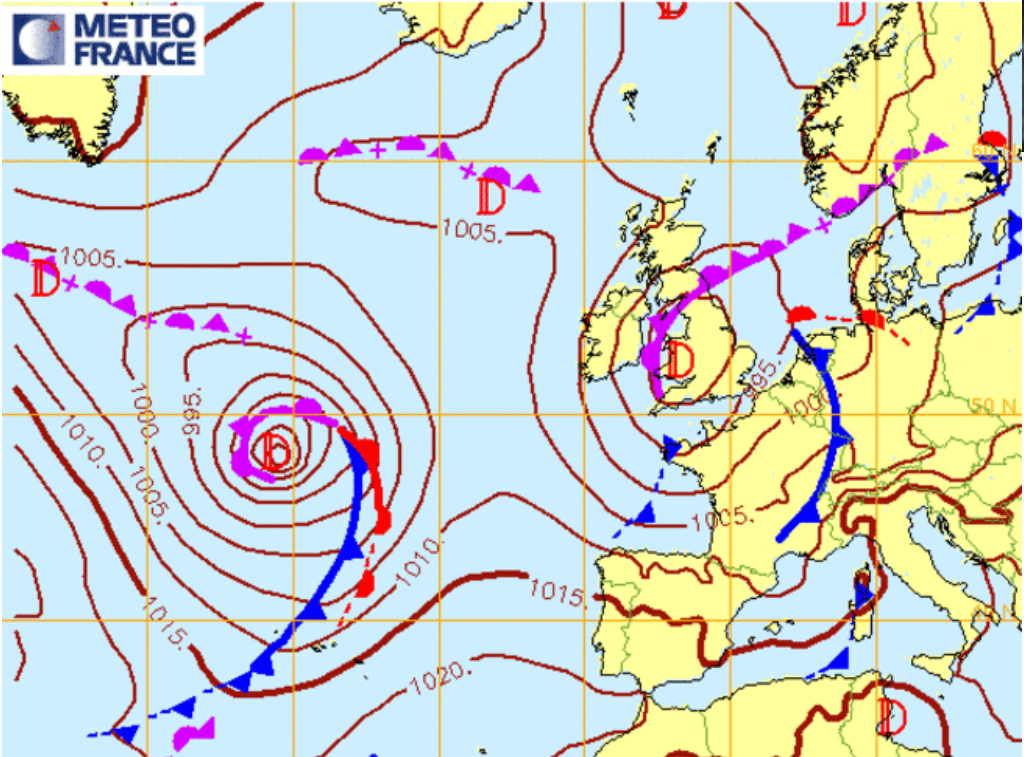
(C) Sat24.com/Eumet



metoffice.gov.uk
© Crown Copyright



Fronts et isobares pour le 04/04/2018 12hUTC (reseau: 03/04/2018 12hUTC)



Analyse Fronts et isobares du 04/04/2018 18hUTC (reseau: 04/04/2018 18hUTC)

