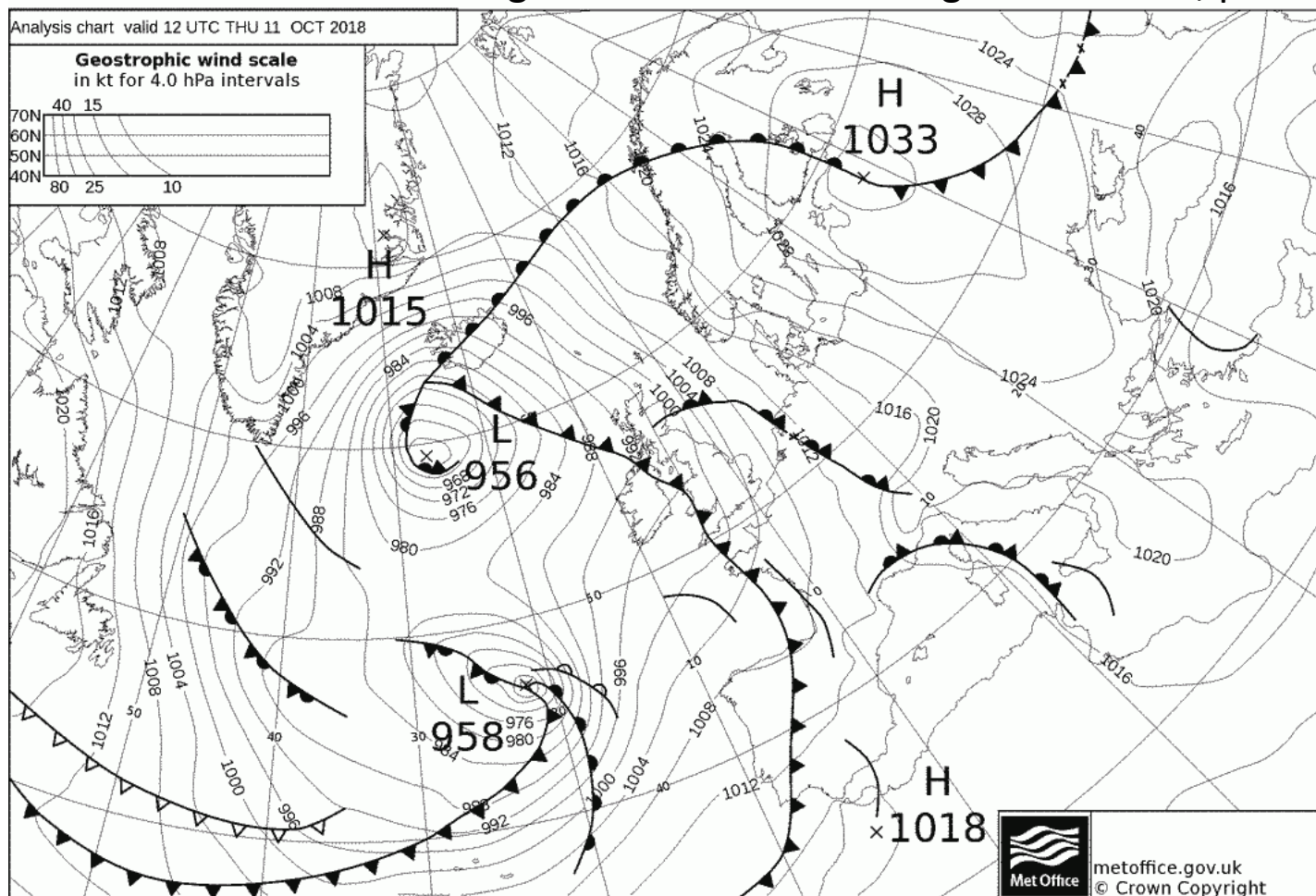


Jeudi 11 octobre 2018 à l'ENVSN:

- Masse d'air instable/ **vent irrégulier**
- Evolution droite à partir de 7H, avec vent de + en + irrégulier
- Vent fort vers 12H et droite avec la 1^{ère} ligne de grains
- Passage du front froid vers 14H
- Plan d'eau très **cisaillé** (importantes différences d'un lieu à un autre)
 - Droite puis molle à 14H30 à l'isthme
 - Pic à 24nds à la Teignouse à 14H50 sous le grain et droite, puis molle

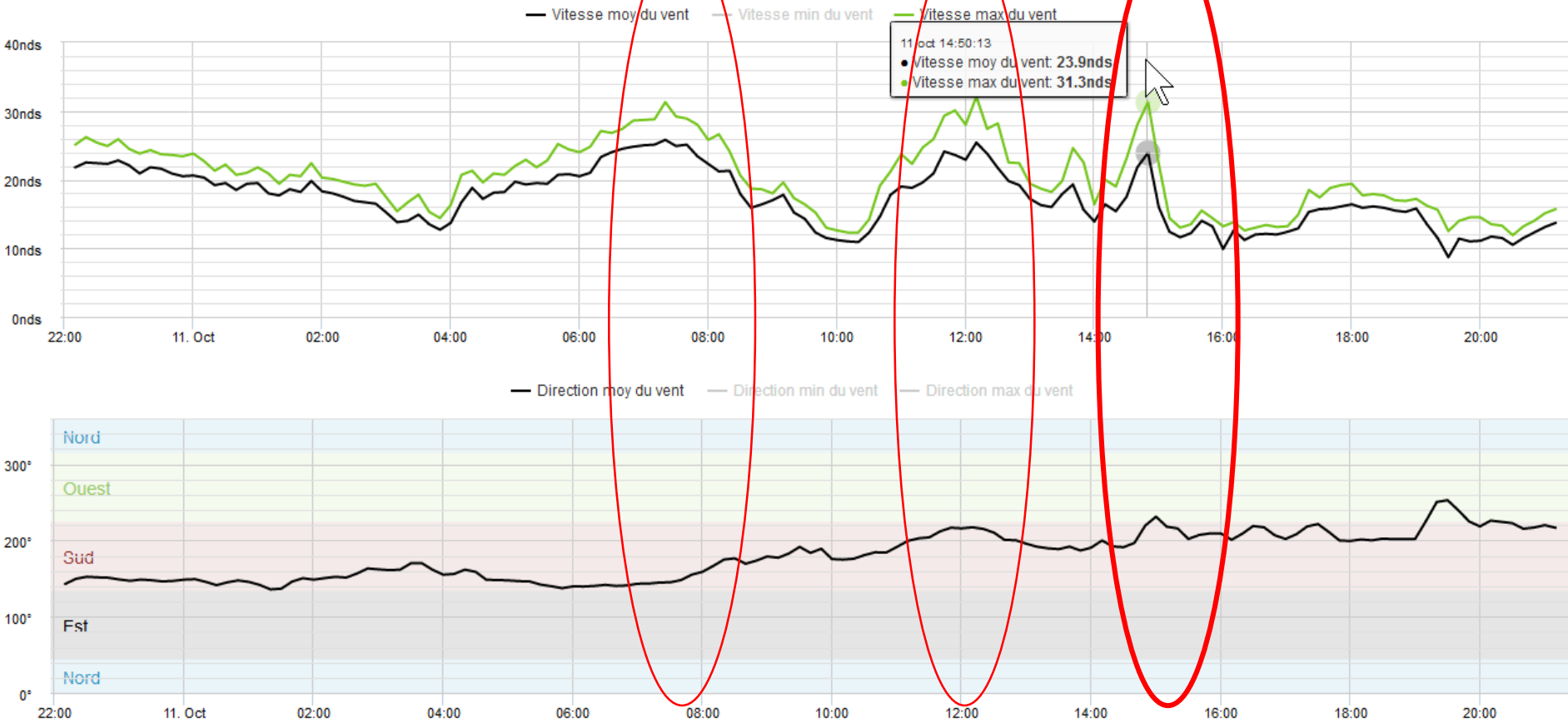


Phare de la Teignouse

2 dernières heures Graphique 6h Graphique 24h **8 derniers jours** Modifier

11/oct 10/oct 09/oct 08/oct 07/oct 06/oct 05/oct 04/oct

Afficher

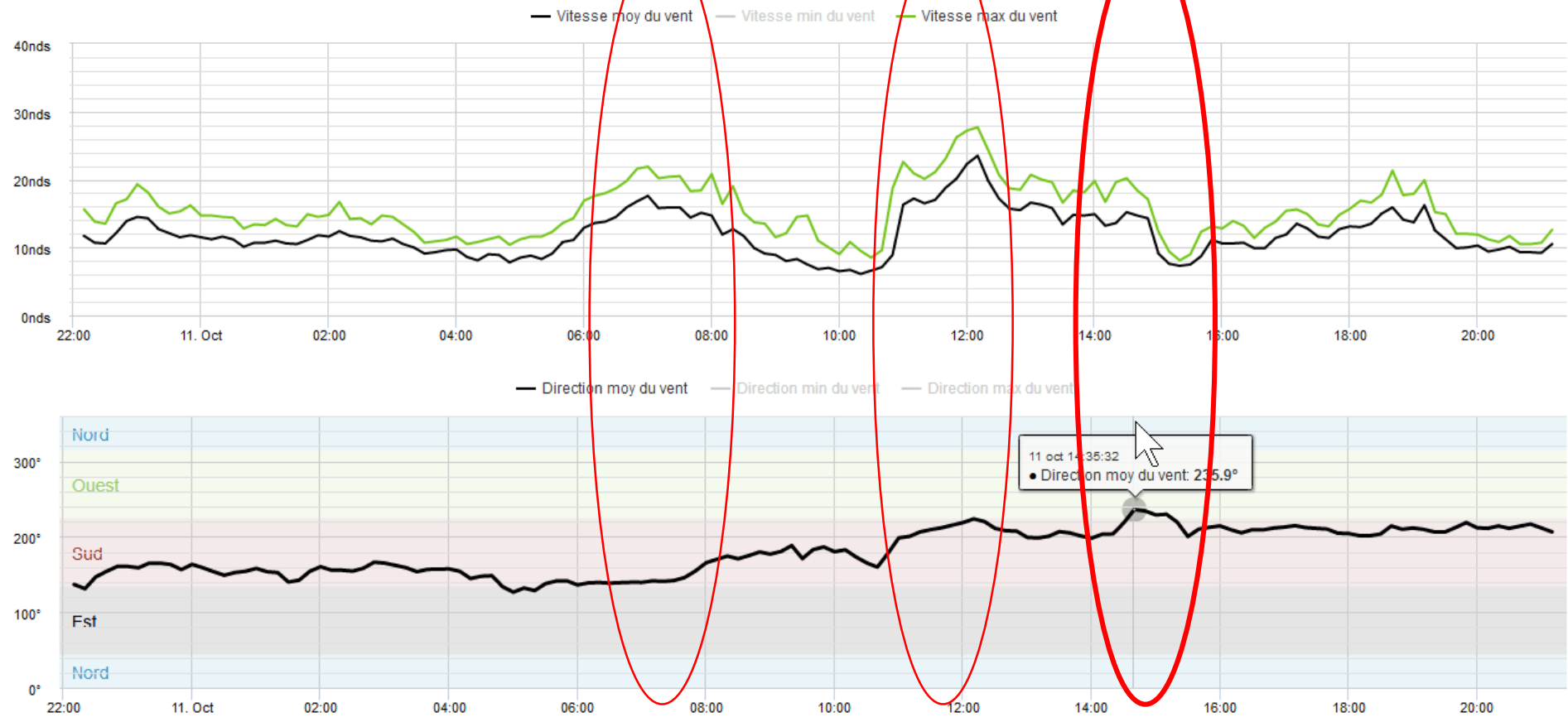


Isthme - Saint Pierre Quiberon

2 dernières heures Graphique 6h Graphique 24h **8 derniers jours** Modifier

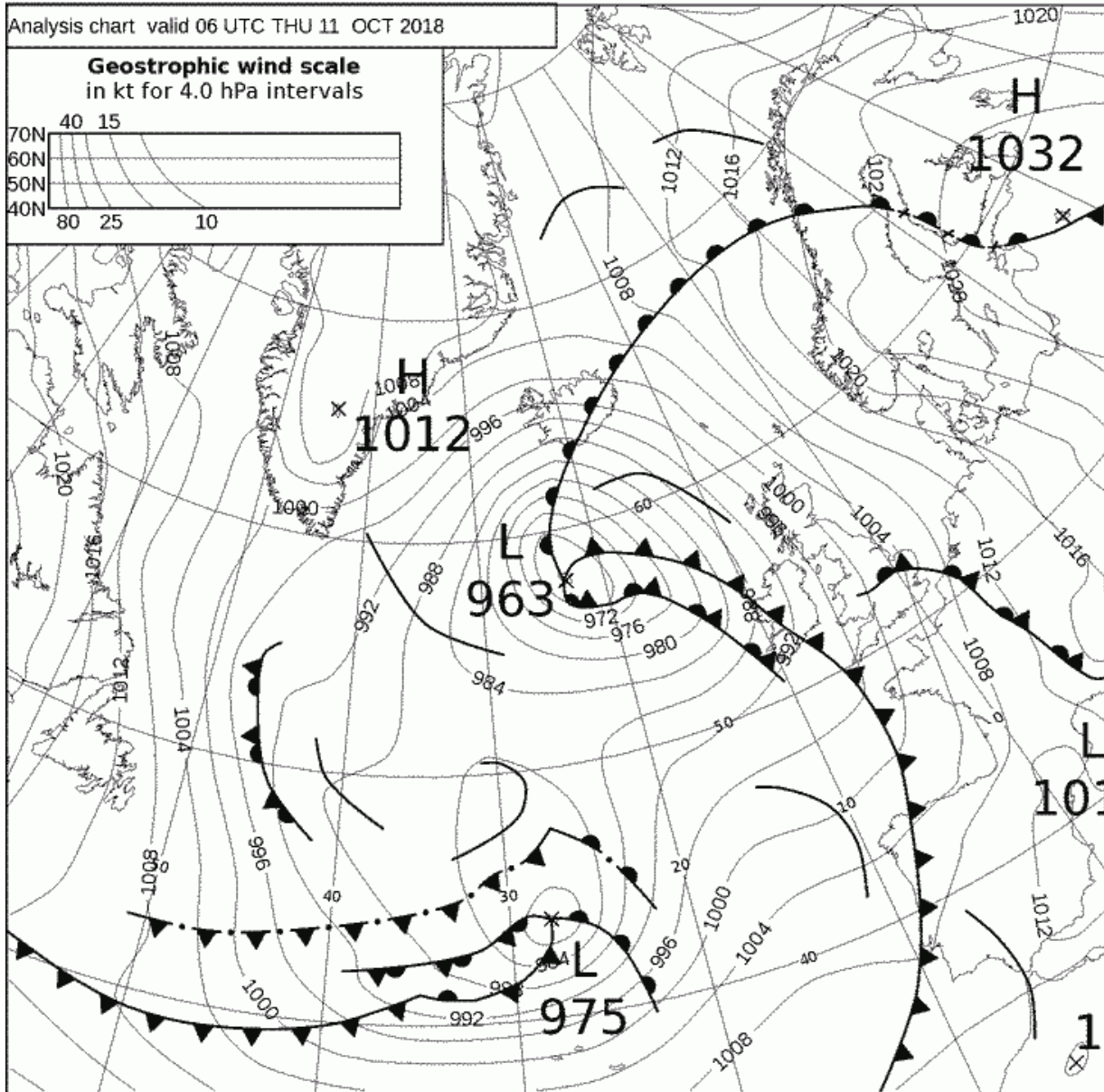
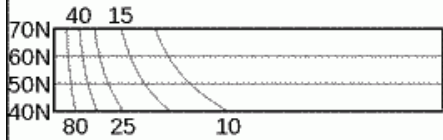
11/oct 10/oct 09/oct 08/oct 07/oct 06/oct 05/oct 04/oct

Afficher



Analysis chart valid 06 UTC THU 11 OCT 2018

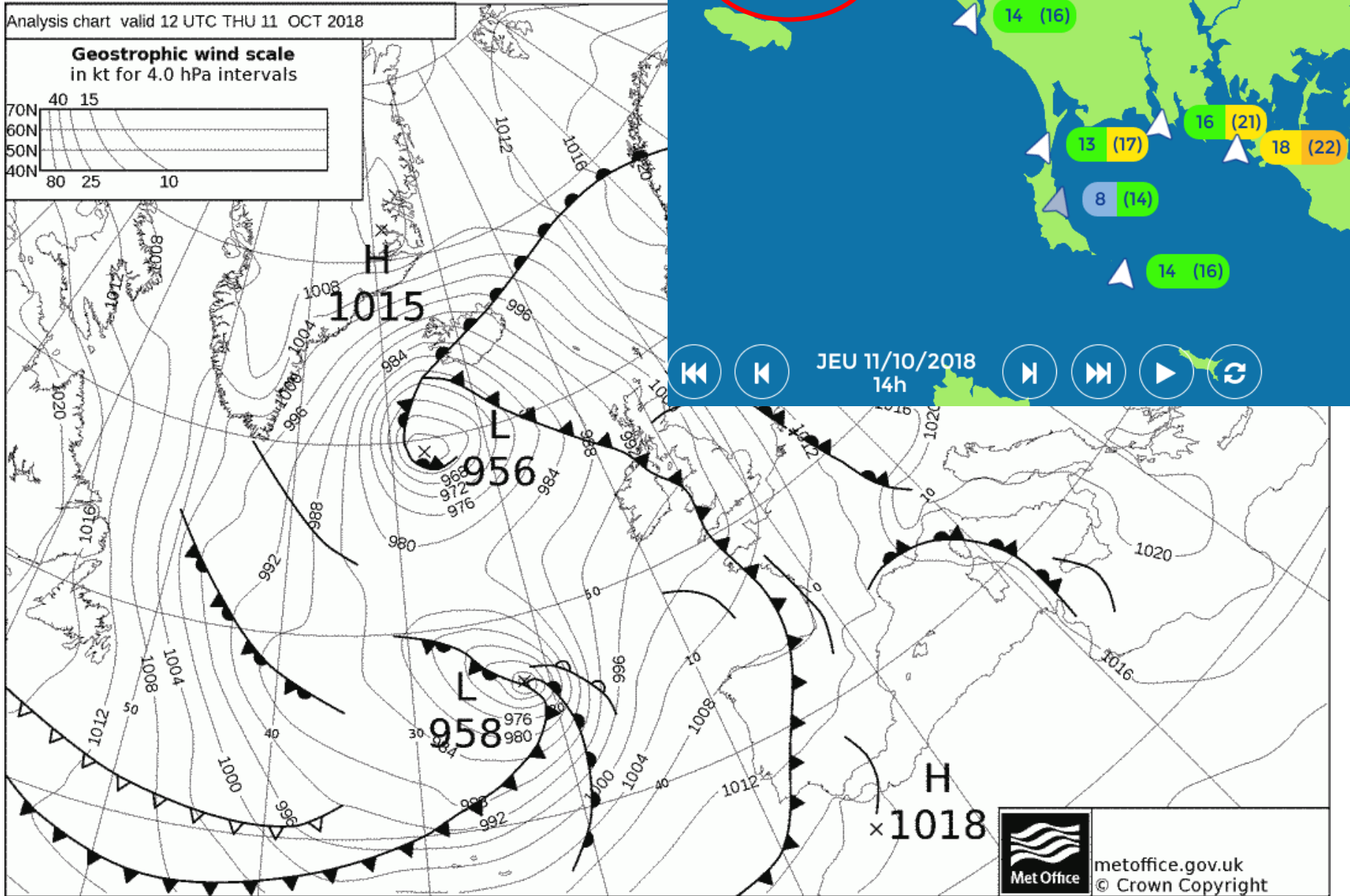
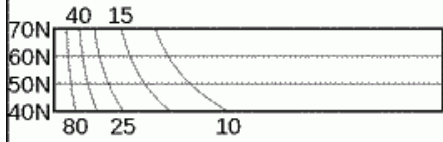
Geostrophic wind scale
in kt for 4.0 hPa intervals



metoffice.gov.uk
© Crown Copyright

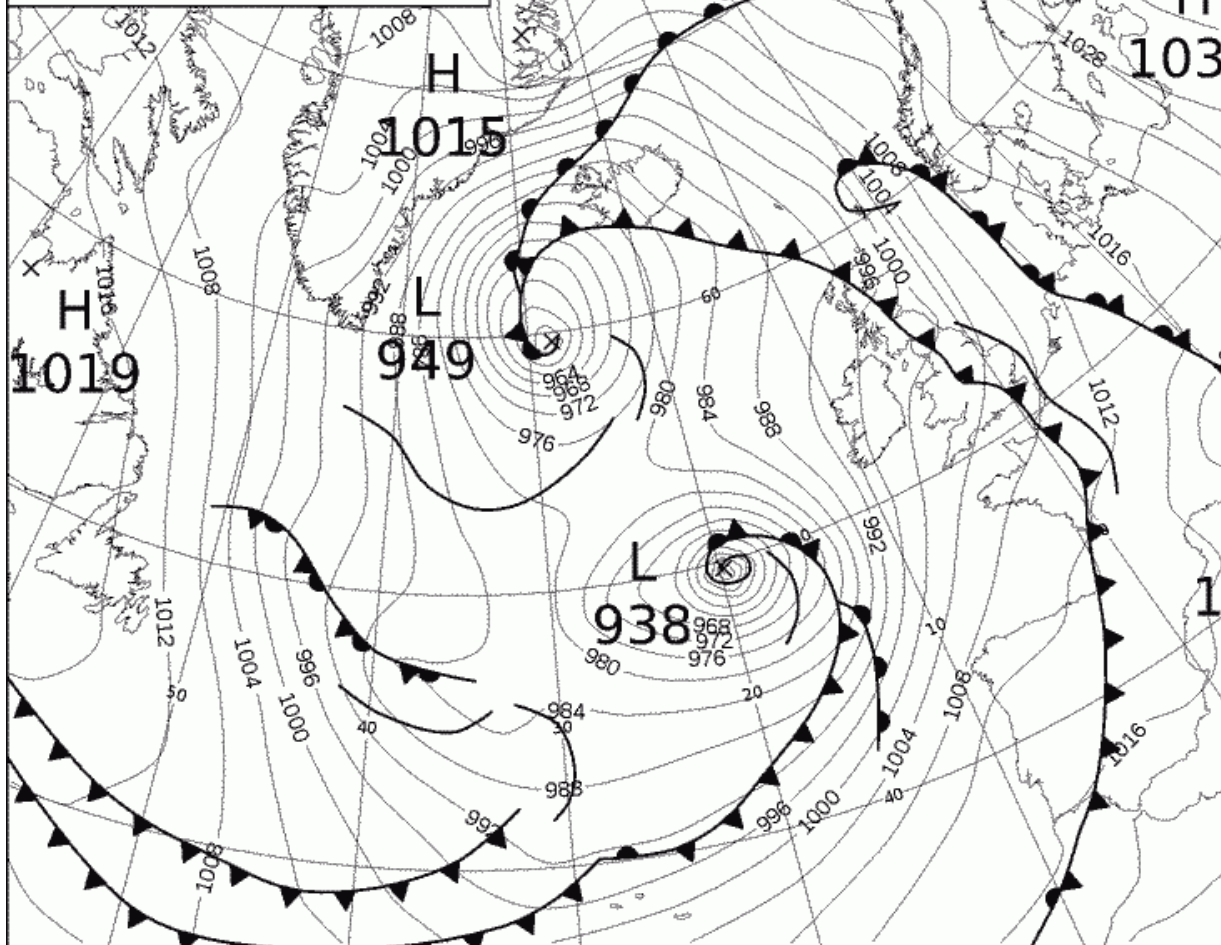
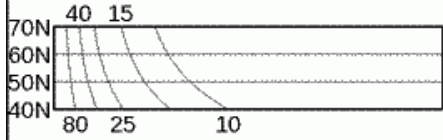
Analysis chart valid 12 UTC THU 11 OCT 2018

Geostrophic wind scale
in kt for 4.0 hPa intervals



Analysis chart valid 18 UTC THU 11 OCT 2018

Geostrophic wind scale
in kt for 4.0 hPa intervals



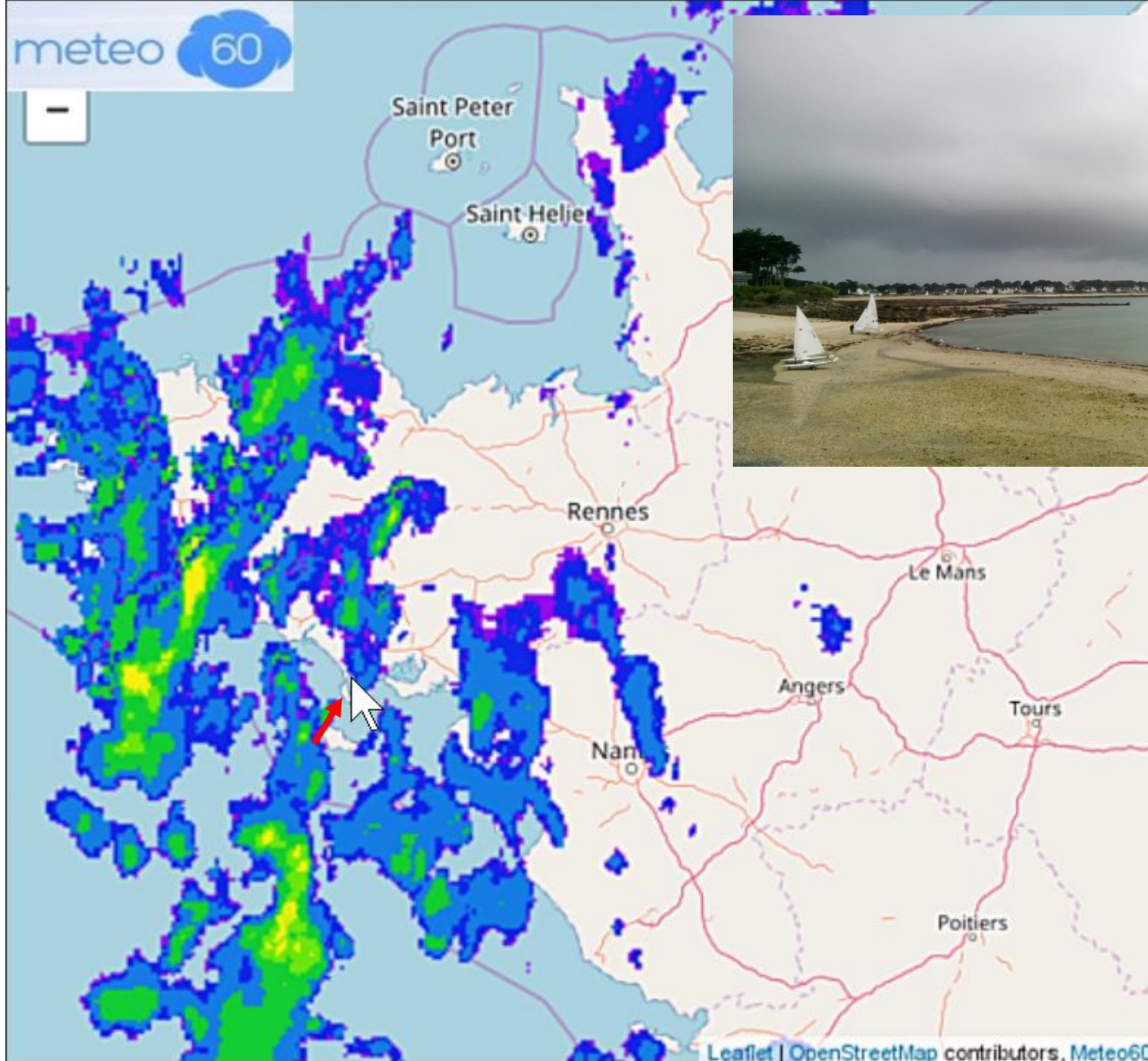
metoffice.gov.uk
© Crown Copyright

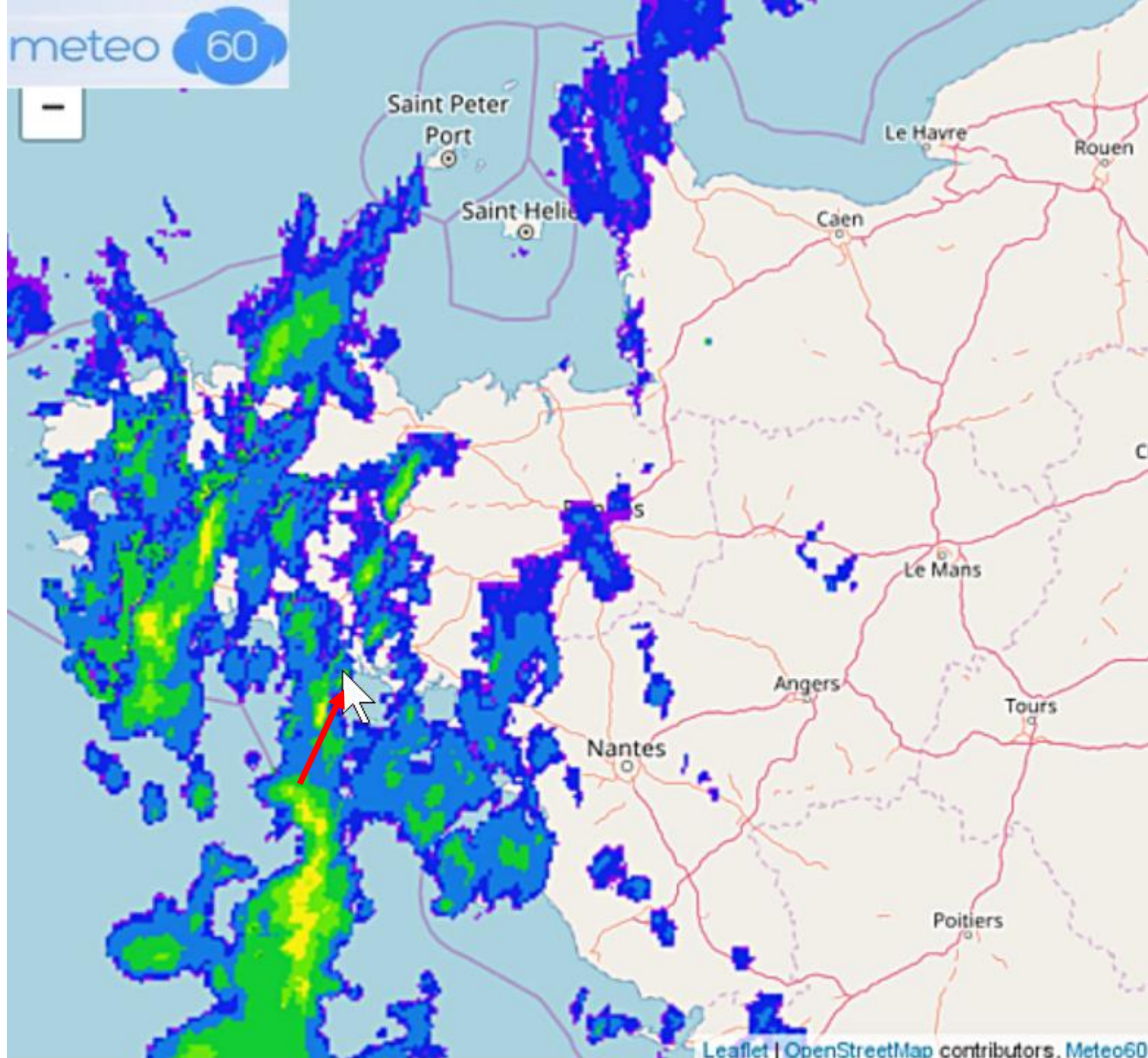
Prise de vue

11/10/2018 14:20

Arrivée de la pluie avec la droite

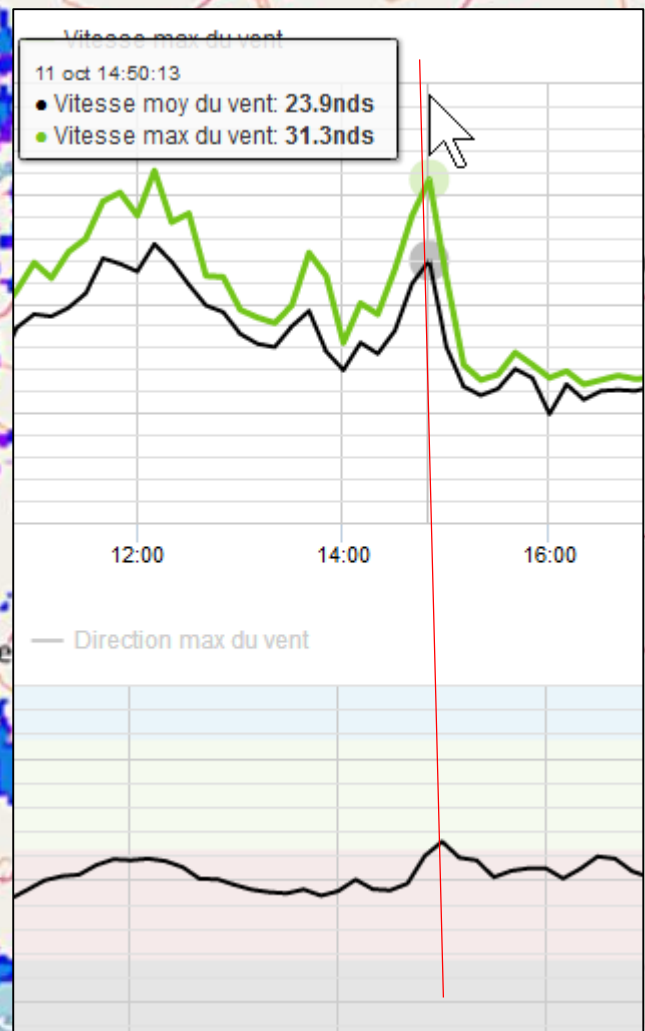
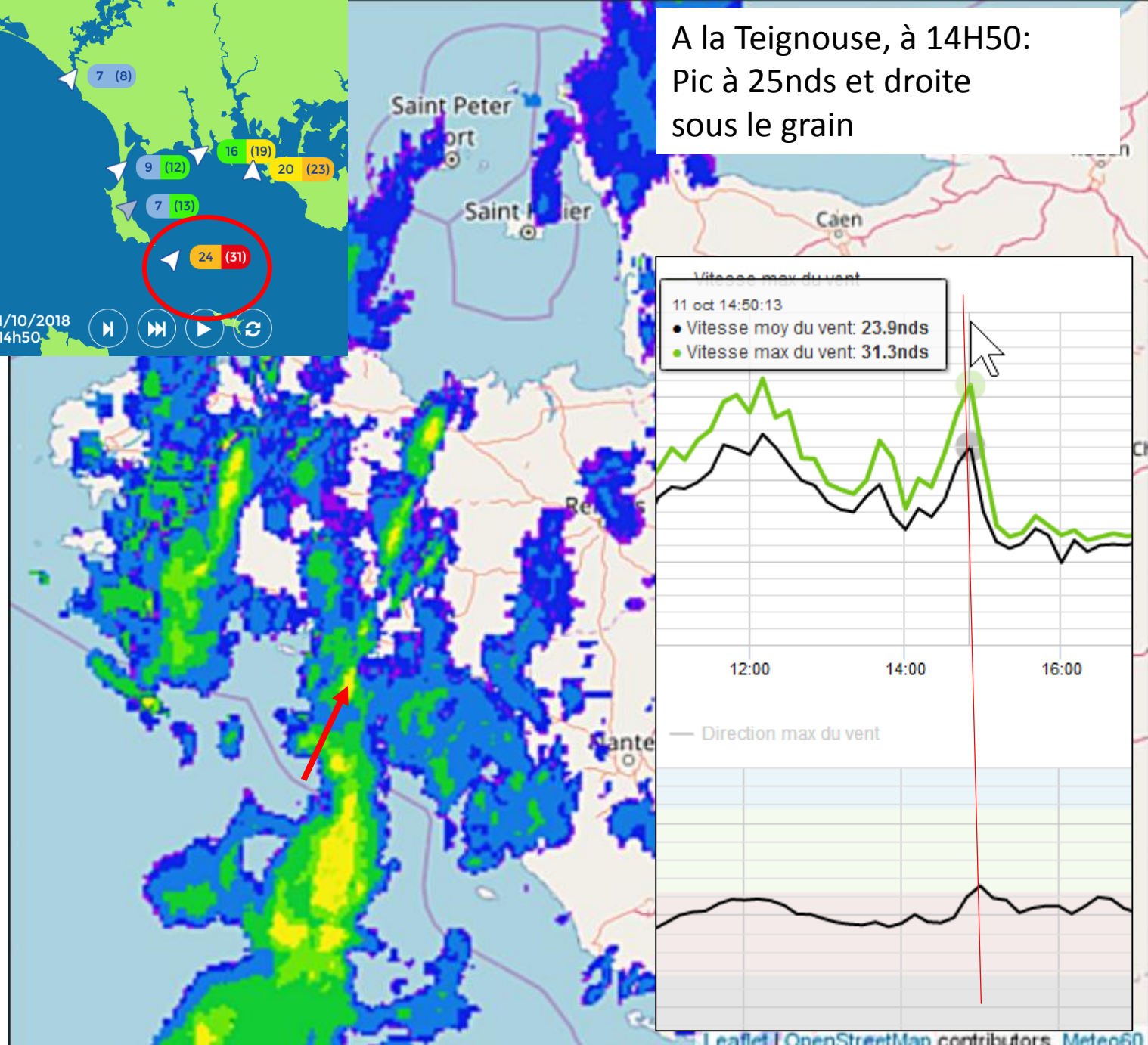


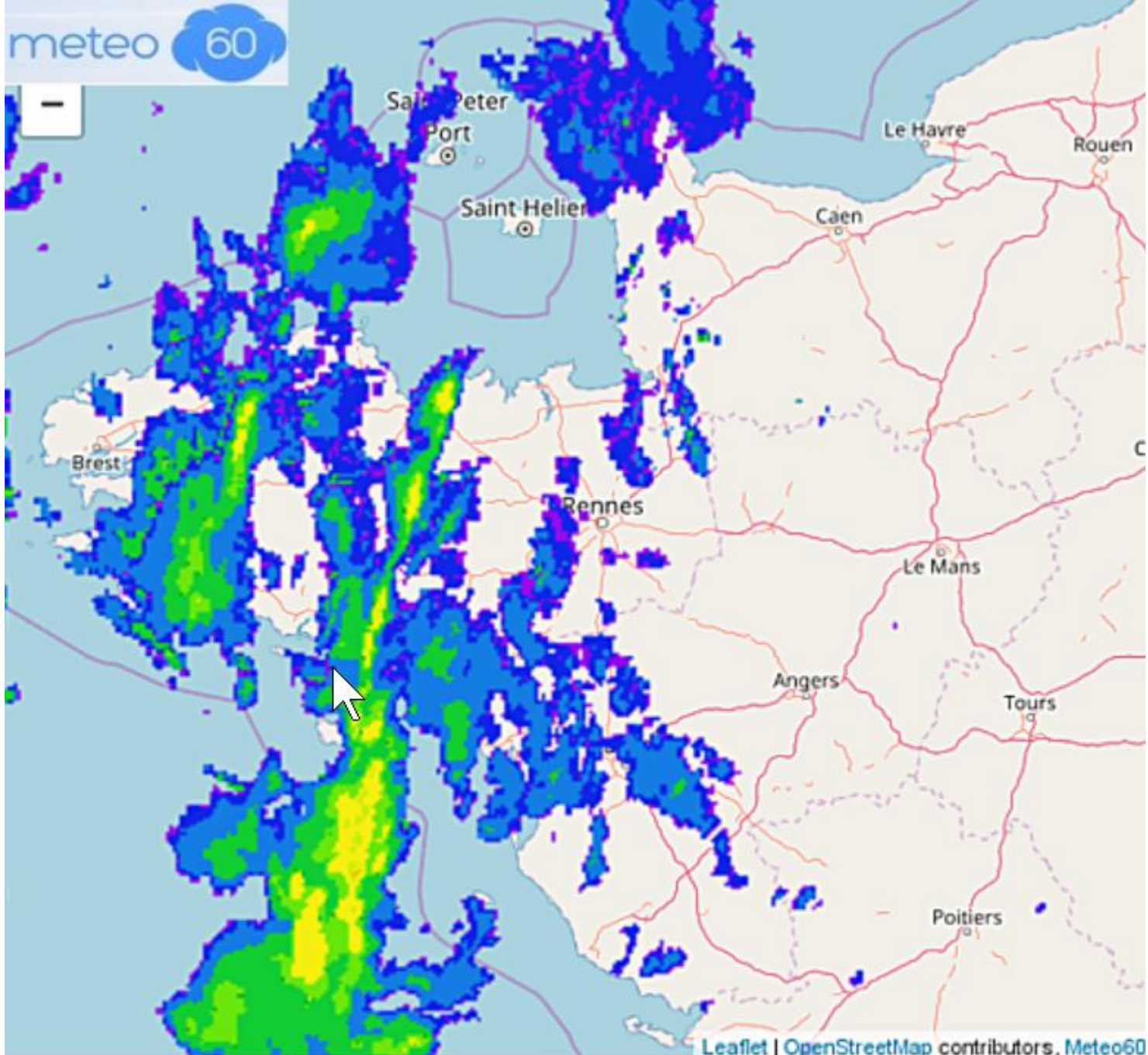


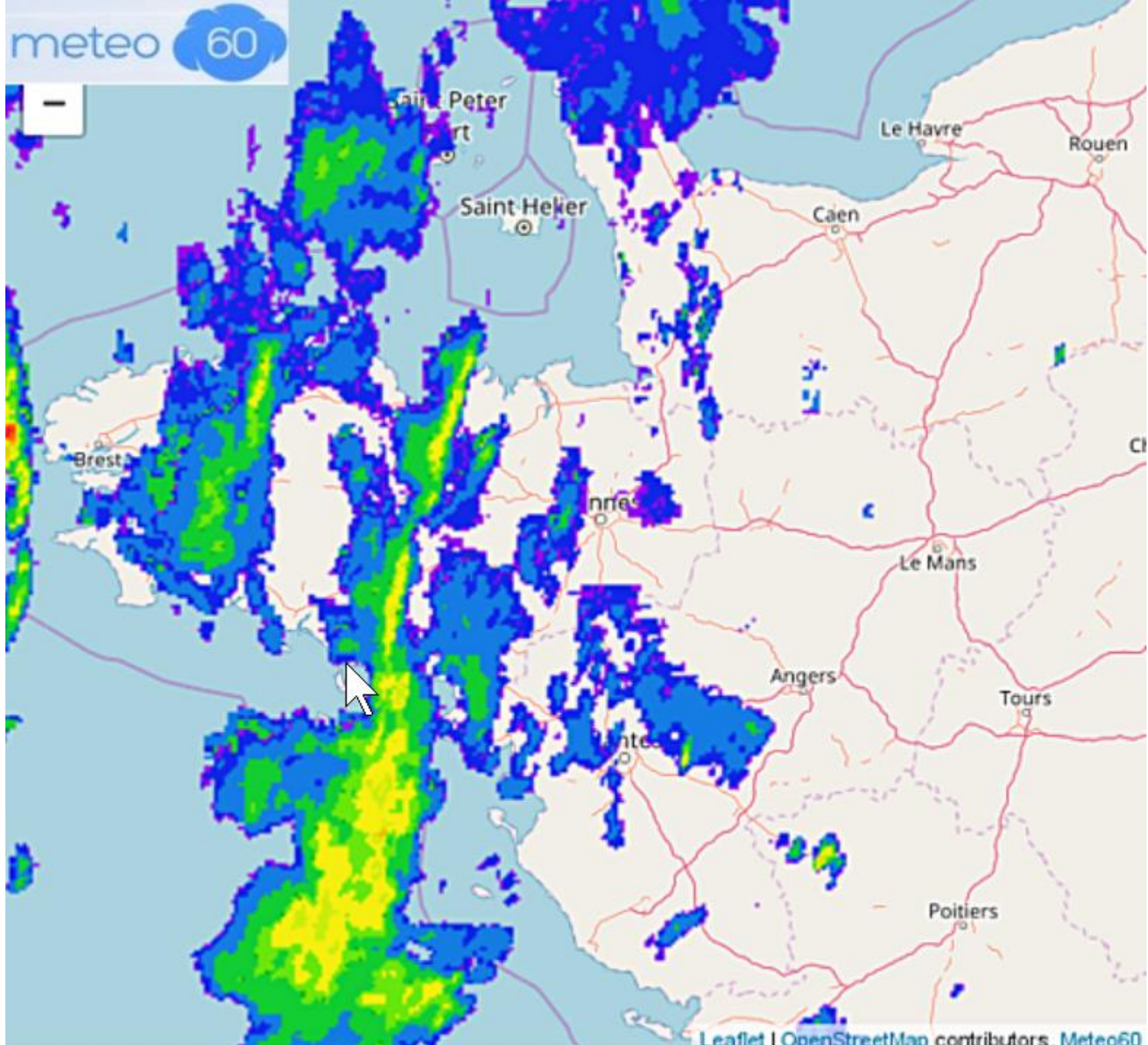


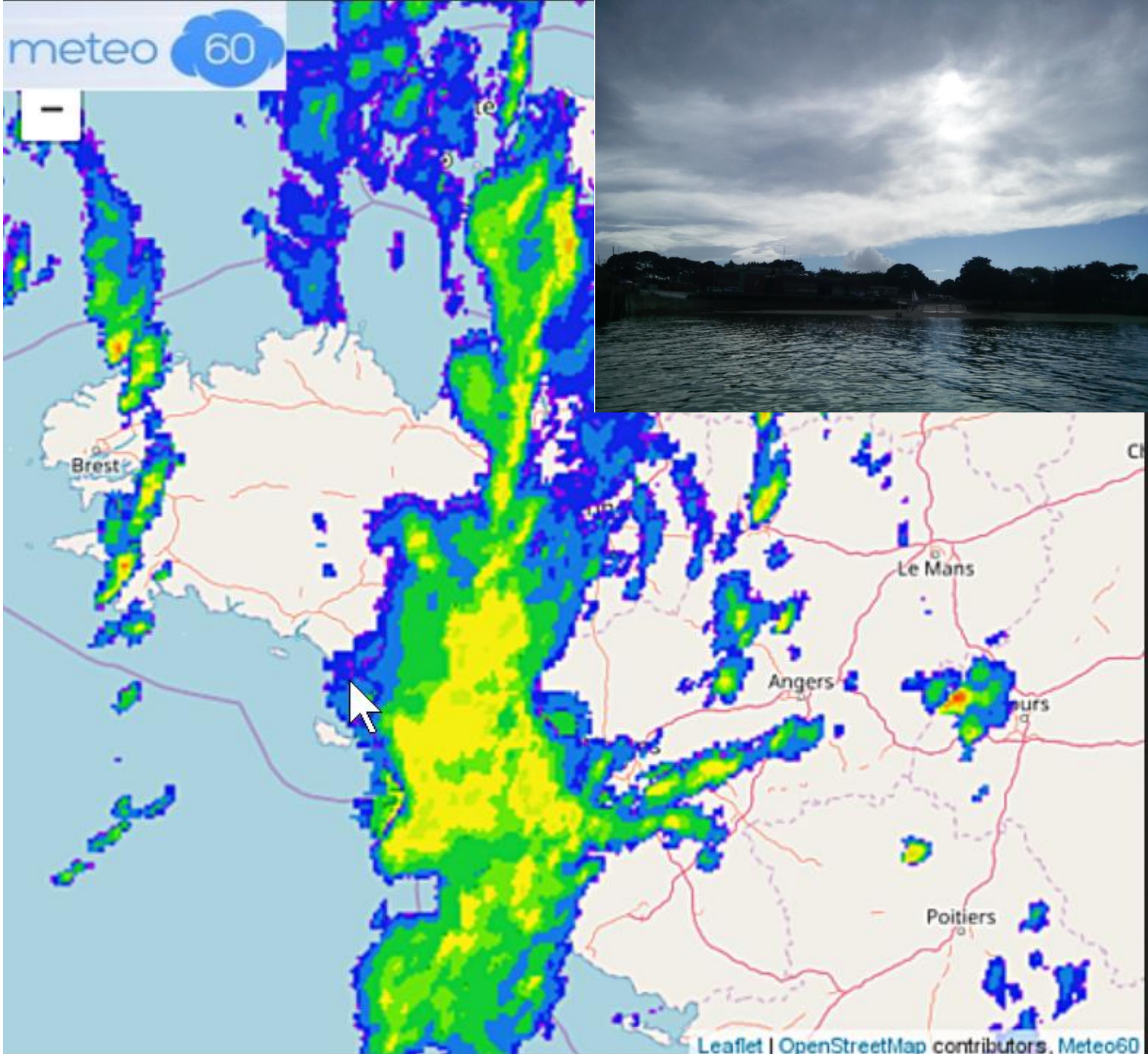


A la Teignouse, à 14H50:
Pic à 25nds et droite
sous le grain









Prise de vue

11/10/2018 16:14



Disparités de prévision des modèles en baie de Quiberon

Meteograms for 47°31'35"N; 3°05'16"W

